



**Victoria Govt has issued 4<sup>th</sup> Nov reviewed advice for community sport. Participation.**



Non Vic Govt. QR Code to send Boat racing name and Pob to HBYC Race committee

Non Vic Govt, QR Code to access the mandatory Top Yacht people on board registration.. Yacht Sail No. and Skipper's AS number required for log on.to register skipper and crew contact details for race one.

<http://tymob.net.au/1414>

**SAILING INSTRUCTIONS  
CLASSIC YACHT ASSOCIATION of AUSTRALIA  
2021/2022 SUMMER SERIES  
RACE ONE 14th November 2021  
Race One will be conducted by the HOBSONS BAT YACHT CLUB  
on behalf of the Classic Yacht Association of Australia Inc. A0034323W  
Vic Ports Corp. Melb. Aquatic Event Approval 44-2021  
SI's Revision V1.0 Issued 8<sup>th</sup> Nov 2021**

**1 RULES.**

The CYAA 2021/20212 Summer Series of races will be governed by:

- 1.1 The Australian Sailing Racing Rules of Sailing (RRS 2021-2024).
- 1.2 The Special Regulations and Prescriptions of Australia Sailing Part 1 For Racing Boats apply.
- 1.3 The [requirements of the Port of Melbourne Corporation](#) (PoMC).
- 1.4 The Marine Safety Act 2010 (Vic) and the Marine Safety Regulations 2012 (Vic).
- 1.5 Any Skipper subject of a complaint by a Ship's Master for any reason whatsoever may be disqualified.
- 1.6 AS Safety Category 6 shall apply. AS Safety Category 7 yachts may be accepted with the express permission of the Organizing Authority.
- 1.7 Boats shall lodge an appropriate Safety Compliance Declaration with their home club for years 2021/2022
- 1.8 Crews on yachts without lifelines must wear PFD1 – Failure to do so will result in boats being scored DSQ
- 1.9 **Crew Declarations** mandatory that all boats register their Crew Declarations via the TopYacht Entry System.
- 1.10 Crew declarations **MUST be completed at least** 15 mins prior to the warning signal of each race electronically via the following link - <http://tymob.net.au/1414>
- 1.11 **RRS Rule 44.1 is changed. The two turns penalty is replaced by the one turn penalty**

**2 NOTICES TO COMPETITOR.**

- 2.1 Notices to competitors will be posted to CYAA members via email and will be posted on the [CYAA website](#).

**3. CHANGES TO SAILING INSTRUCTIONS**

- 3.1 Any change to the Sailing Instructions will be posted before 09:00 on the day it will take effect, except that any change to the schedule of races will be posted by 20:00 on the day before it will take effect.
- 3.2 Changes to the Sailing Instructions will be available at [CYAA website](#).

**4 CODE OF CONDUCT**

- 4.1 [DP] Competitors and support persons shall comply with reasonable requests from race officials.

**5 SIGNALS MADE ASHORE**

- 5.1 Signals made ashore will be made on the HBYC flagpole.

## **6. RACING AREA**

6.1 Racing area will be in the northern waters of Port Phillip.

## **7. THE START.**

- 7.1 Race one will be started by using RRS 26 with the warning signal made five minutes before the starting signal. The scheduled warning signal for race one will be at 1025 hrs.
- 7.2 The starting line may be a between a staff displaying an orange flag on the Race Committee Vessel at the starboard end and the course side of the 'port-end' starting mark, an orange cylindrical buoy or fixed mark.
- 7.3 The HBYC Race committee may use a countdown sequence for the start on Channel 69
- 7.4 A boat that does not start within 10 minutes after her starting signal will be scored Did Not Start (DNS) without a hearing. This changes RRS 63.1, A4 and A5.

## **8. THE COURSES.**

- 8.1 Courses for HBYC conducted CYAA 2021/2022 Summer Series races are attached to this document.
- 8.2 All marks nominated are rounding marks.
- 8.3 Race one course shall be designated on the HBYC Race Committee Vessel by the corresponding numeral pennant.

## **9. SHORTENING or ABANDONING RACE AFTER START**

- 9.1 HBYC race committee may be shorten or abandon this race in accordance with RRS.
- 9.2 When code flag S is displayed on a HBYC Race committee vessel signal mast finish between the adjacent rounding mark and the HBYC Race Committee vessel.

## **10 THE FINISH.**

- 10.1 The finishing line is between a staff on the HBYC Racer Committee vessel displaying a blue flag at the starboard end and the course side of the port end finishing mark.
- 10.2 [DP] A boat no longer racing shall promptly clear the finish area and not interfere with another boat that is racing

## **11 PENALTY SYSTEM**

- 11.1 For Classic Yachts RRS 44.1 is changed so that the Two-Turns Penalty is replaced by the One-Turn Penalty.

## **12. TIME LIMIT**

- 12.1 The time limit for this race (race one) shall be 180 minutes after the actual start. Boats crossing the finish line after this time has expired will be scored DNF.
- 12.2 At the expiry of the time limit, the Race Officer may advise on channel 69 that the time limit for the race has expired.

## **13 PROTESTS AND REQUESTS FOR REDRESS**

- 13.1 Protests or Requests for redress shall be notified to a HBYC Race Official within two hours of the protesting yacht's finishing time and lodged in writing on the proscribed form by the following Monday.
- 13.2 Protests and request for redress will be heard at HBYC Nelson Place, Williamstown at a time set by HBYC.
- 13.3 The protest committee will consist of two members of the organising club and one member the Classic Yacht Association of Australia.

## **14. SCORING.**

- 14.1 The scoring system is the Low Point System with modifications in accordance with the Notice of Race.
- 14.2 Series Aggregate Points will be allocated for the best corrected time performance based on each starter's actual on course elapsed time after passing through the allocated course finish line.

## **15. SAFETY.**

- 15.1 The race will start and continue at the Race Directors discretion. Upper wind limit for classic yacht racing is a sustained wind strength of 25 knots.
- 15.2 A boat that retires from the race is requested to notify the race committee as soon as possible on VHF Channel 69

## 15 OFFICIAL BOATS

15.1 Official HBYC Race Committee vessels will display the HBYC burgee.

## 15. RADIO COMMUNICATION.

15.1 The HBYC Race Committee will monitor VHF radio channel 69.

15.2 Skippers are required to maintain a dual listening watch on VHF Channels 69, 12 and 16 before, during and after racing.

15.3 Except in an emergency a boat shall neither make radio transmissions while racing nor receive radio communications not available to all boats. This restriction also applies to mobile telephones.

15.4 All boats, without exception, shall carry a VHF radio capable of receiving and transmitting on Channels 12, 16 and 69. Failure to do so may result in a boat being scored DSQ.

15.5 If calls to the race committee on channel 69 receive no response VHF Channel 16 is to be used to establish communication and for switching over to an agreed working channel.

## 16 RISK STATEMENT

16.1 RRS 3 states: 'The responsibility for a boat's decision to participate in a race or to continue to race is hers alone.' By participating in this event each competitor agrees and acknowledges that sailing is a potentially dangerous activity with inherent risks. These risks include strong winds and rough seas, sudden changes in weather, failure of equipment, boat handling errors, poor seamanship by other boats, loss of balance on an unstable platform and fatigue resulting in increased risk of injury. **Inherent in the sport of sailing is the risk of permanent, catastrophic injury or death by drowning, trauma, hypothermia or other causes.**

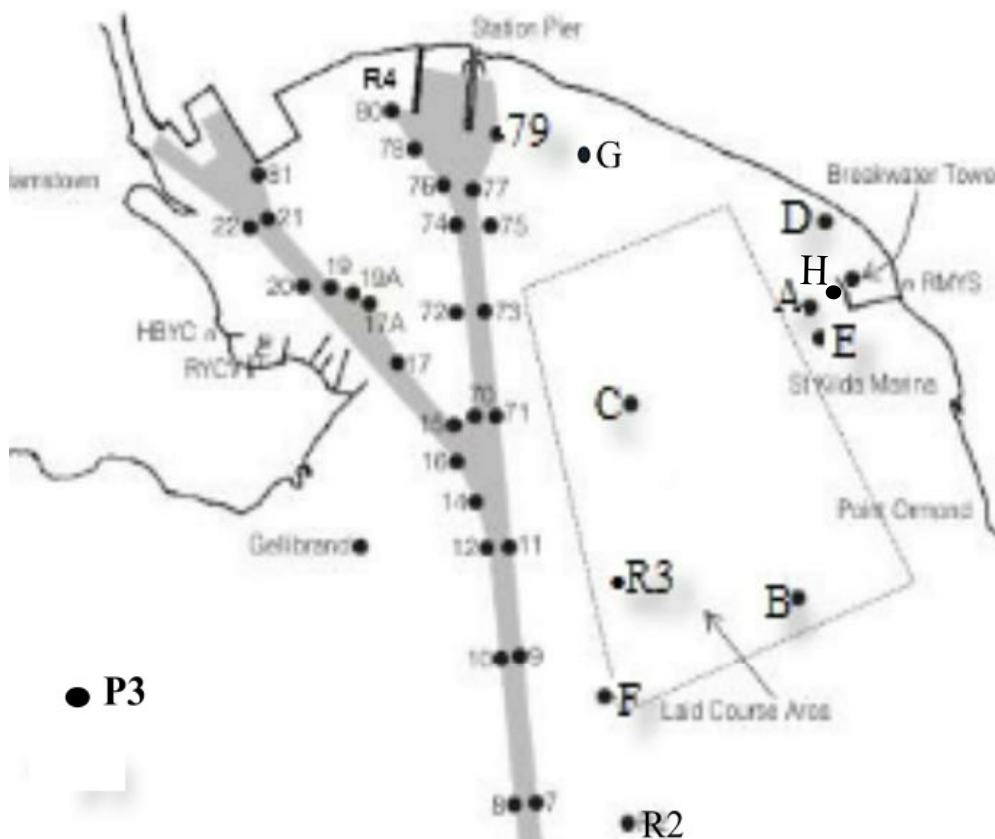
## 17. INSURANCE

17.1 Each participating boat shall be insured with valid third party liability insurance with a minimum cover \$10,000,000 per incident or the equivalent.

## 18 FURTHER INFORMATION

CYAA Handicapper  
peter.costoloe@gmail.com

## Locations of DMVC Laid Marks





**Classic Yacht Association of Australia (Victoria)**  
**2021/2022 Summer Series Series**  
**Course Descriptions for HBYC conducted races**    Rev 5.0 July 5 2019

**Course No. 1**

**Approx. 7.5 Nautical miles**

**Start in a Southerly direction, leave Channel lateral mark 71 to Starboard, round mark R2 to Port, round RMYS D Mark to Port, round R4 to Port, then to finish line.**

**Course No. 2**

**Approx. 7.2 Nautical miles**

**Start in a Northerly direction, round channel lateral 74 to Starboard, round RMYS D mark to Starboard, round R3 to Starboard, round R4 to Port, then to finish line.**

**Course No. 3**

**Approx. 7.7 Nautical miles**

**Start in a Northerly direction, pass mark R4 to Starboard, round RMYS D mark to Starboard, round mark R2 to Starboard, leave channel lateral marks 9,11 and 71 to Port, then to finish line**

**Course No. 4**

**Approx. 7.6 Nautical miles**

**Start in an Easterly direction, round RMYS D mark to starboard, round mark R2 to starboard, leave channel lateral marks 9, 11, 71 to Port, round mark R4 to port, then to finish line.**

**Course No. 5**

**Approx. 7.7 Nautical miles**

**Start in a Westerly direction, round R4 to Port, leave channel lateral marks 9, 11, 71 to Starboard, round mark R2 to Port, RMYS D Mark to Port, then to finish line.**

**Course No. 6**

**Approx. 9.2 Nautical miles**

**Start in a Southerly direction, leave channel lateral marks 71 and 11 to Starboard, round mark R3 to Starboard, leave channel lateral marks 9 and 10 to Starboard, round pipeline mark P3 mark to Starboard, leave Gellibrand Shoal Mark and channel lateral mark 16 to Port, then to finish line.**

**Course No. 7**

**Approx. 9.6 Nautical miles**

**Start in a northerly direction, round mark R4 to Starboard, round RMYS C Mark to Starboard, leave channel lateral mark 16 and Gellibrand Shoal Mark to Starboard, round pipeline mark P3 to Starboard, leave Gellibrand Shoal Mark to Port, leave channel lateral mark 16 to Port, then to finish line.**

**Course 8**

**Approx. 8.3 Nautical miles**

**Start in a northerly direction, round mark R4 to Starboard, round RMYS D Mark to Starboard, through gate formed by race committee boat and the adjacent plain orange cylindrical mark, round mark R4 to Starboard, round RMYS D Mark to Starboard then to finish line.**

**Course 9**

**Approx. 8.3 Nautical miles**

**Start in an easterly direction, RMYS D Mark to Port, round mark R4 to Port, through gate formed by race committee boat and the adjacent plain orange cylindrical mark, then RMYS D Mark to Port, round mark R4 to Port then to finish line.**