



# SAILING INSTRUCTIONS

Boat racing and PoB sign on

## 2021 Winter Series

Boat sign off

### Race Five 15<sup>th</sup> August 2021

**The race will be organised and conducted by the Hobsons Bay Yacht club on behalf of the Classic Yacht Association of Australia**

#### **Vic Port Corp AEA 33-2021 applies to this event**

The Organising Authority for Race Five of the 2021 Winter series is the Hobsons Bay Yacht Club.

#### **1 RULES**

- 1.1 The event will be governed by the rules as defined in The Australian Sailing Racing Rules of Sailing (RRS 2021-2024).
- 1.2 Special regulations in accordance with Australian Sailing Special Regulations.
- 1.3 Individual class and rating rules as appropriate
- 1.4 COVID 19 restrictions apply. The Services Victoria QR code of boats home club is to be used by all personal on each boat
- 1.5 RRS Appendix T shall apply.
- 1.6 Requirements of the [Victoria Ports Corporation Melbourne \(VPCM\) regulations](#), May 2019. Skippers shall at all times abide by the VPCM Regulations covering the navigation of small craft and yachts and the directions of race officials patrolling the shipping channels.
- 1.7 Any Skipper subject of a complaint by a Ship's Master for any reason whatsoever may be disqualified.
- 1.8 Australia Sailing Category 6 shall apply. AS Safety Category 7 yachts may be accepted with the express permission of the organising authority.
- 1.9 Boats shall have lodged an appropriate 2020/2021 racing season Safety Compliance Declaration with their home club prior to the 2021 Winter Series
- 1.10 Crews on yachts without lifelines must wear PFD1 – Failure to do so will result in boats being scored DSQ.
- 1.11 **RRS Rule 44.1 is changed so that the two turns penalty is replaced by the one turn penalty. Attention is drawn to RRS4, Decision to Race: "The responsibility for a boat's decision to participate in a race or to continue racing is hers alone."**

#### **2 CHANGES TO SAILING INSTRUCTIONS**

- 2.1 Any change to these sailing instructions will be posted on the [CYAA Web site](#) before 0900 on the day it will take effect, except any change to the schedule of races will be posted by 2000 hours on the day before it will take effect.
- 2.2 Changes to these Sailing Instruction may be made on the water by use of **VHF Channel 69**
- 2.3 Nominated boat representatives may be notified by SMS.

#### **3 COMMUNICATIONS WITH COMPETITORS**

- 3.1 Notices to Competitors will be posted to entrants via email and will be posted on the HBYC official notice boards and the [CYAA website](#).
- 3.2 The race office is located at HBYC Club House, the HBYC Race Mobile # 0474 079 202 email [HBYC Sailing Administrator](#)
- 3.3 The HBYC race committee intends to monitor and communicate with competitors on **VHF Channel 69**.
- 3.4 [DP] While racing, except in an emergency, a boat shall not make voice or data transmissions and shall not receive voice or data communication that is not available to all boats

#### **4 CODE OF CONDUCT**

- 4.1 [DP] Competitors and support persons shall comply with reasonable requests from race officials.

#### **5 SIGNALS MADE ASHORE**

- 5.1 When flag AP is displayed ashore on the HBYC flag pole, 1 minute is replaced with 'not less than 30 minutes.
- 5.2 Flag Y when displayed with the warning signal means wear PFDs at all times whilst afloat. This changes RRS Race Signals.

## 6 SCHEDULE OF RACES

6.1

**Sunday 15<sup>th</sup> August**  
Start Time      Number of Races  
**1030 hrs**              **1**

**Note: Using the assigned QR code, skippers of each competing boat in Race two to send Boat racing and PoB by SMS to HBYC Race Officer prior to 1015 hours.**

## 7 RACE POSTPONED PROCEDURE

7.1 In the event of a race start postponement, boats will be notified on **VHF channel 69** or by SMS sent to boat skippers.

## 8 CLASS FLAGS

8.1 A class flag for this event will be the CYAA Burgee

## 9 RACING AREA

9.1 The racing area for race three shall be either the northern waters of Port Phillip or in Hobson's Bay.

9.2 Selection of racing area is at the discretion of the HBYC race officer.

## 10 THE COURSES

10.1 The allocated course for HBYC conducted CYAA 2021 Winter Series races will be signalled with numeral flags, on the HBYC committee boat, when the HBYC committee vessel goes on station. These courses are attached to this document.

## 11 MARKS

11.1 [Location of Port Phillip marks](#) can be downloaded from this link.

## 12 OBSTRUCTIONS

12.1 Port Melbourne and Williamstown shipping channels.

## 13 THE START

13.1 The scheduled warning signal for Race 5 will be at 1025 Hrs.

13.2 The HBYC starting line will be in the area bounded by RMYS Mark C, RMYS Mark G and Port of Melbourne channel lateral mark 74.

13.3 The START line is between the signal mast on the Committee Boat, displaying a 'On Station' orange flag, and a plain orange cylindrical mark.

13.4 The HBYC Race committee may use a countdown sequence for the start on **VHF Channel 69**.

13.5 A boat starting later than 10 minutes after her starting signal will be scored Did Not Start without a hearing. This changes rule A5.

## 14 SHORTENING or ABANDONING RACE AFTER START

14.1 HBYC race committee may shorten or abandon race three in accordance with RRS.

## 15 THE FINISH

15.1 The finishing line is a line between the signal mast on the "On Station" Committee Boat, displaying a blue flag, and a plain orange cylindrical mark.

15.2 [DP] A boat no longer racing shall promptly clear the finish area and not interfere with another boat that is racing.

## 16 SIGNING ON

16.1 All boats shall report their intention to start the race.

16.2 Boats must use the allocated QR Code for race five to indicate their intention to start and the number of Persons on Board. (POB to the HBYC Race Officer using the QR code displayed on the front page of these Sailing Instructions.

16.3 Boats not indicating their intention to start by 1015 hrs. to start will be deemed not starting

16.4 All crew of each boat must use the allocated QR code for their home club to register their personal contact details before their boat departs from its home club.

16.5 A boat that retires from Race five shall notify the HBYC race committee at the first reasonable opportunity by **VHF Channel 69**

## 17 PENALTY SYSTEM

17.1 For all boats competing in race three of the 2021 Winter Series Rule 44.1 is changed so that the Two-Turns penalty is replaced by the One-Turn penalty. This alters RRS 44.1

## 18 TIME LIMITS

18.1 The duration limit for race three will be 150 minutes from the actual race start time. All boats crossing the finish line after this time will be scored DNF. This changes RRS 35 A4 and A5.

## 19 PROTESTS AND REQUESTS FOR REDRESS

19.1 Protests or Requests for redress shall be notified to a Race Official within two hours of the protesting yacht's finishing time and lodged in writing on the proscribed form by the following Monday.

19.2 Protests and request for redress will be heard at HBYC Nelson Place Williamstown at a time set by HBYC

19.3 The protest committee will consist of two members of the organising club and one member the Classic Yacht Association of Australia.

## 20 SCORING

20.1 The scoring system is the "Low Point System" with modifications in accordance with the Notice of Race.

20.2 Series Aggregate Points will be allocated using the best corrected time score for 7 races in this 9 race Winter series.

## 21 SAFETY

21.1 The race will start and continue at the Race Directors discretion. Upper wind limit for classic yacht racing is a sustained wind strength of 25 knots.

21.2 A boat that retires from a race is requested to notify the race committee as soon as possible on **VHF Channel 69**.

## 22 OFFICIAL BOATS

22.1 The official HBYC Race Committee vessel will display the HBYC burgee.

## 23 RADIO COMMUNICATION

23.1 Race communication will be via **VHF Channel 69**. Competing yachts must maintain a listening watch at all times whilst preparing to race and afloat.

23.2 Except in an emergency, a boat shall neither make radio transmissions while racing nor receive radio communications not available to all boats. This restriction also applies to mobile telephones.

## 24 DISCLAIMER OF LIABILITY

24.1 Competitors participate in 2021 Winter Series racing entirely at their own risk. See rule 4, Decision to Race. *"The responsibility for a boat's decision to participate in a race or to continue racing is hers alone."* The organizing authority will not accept any liability for material damage or personal injury or death sustained in conjunction with or prior to, during, or after the regatta.

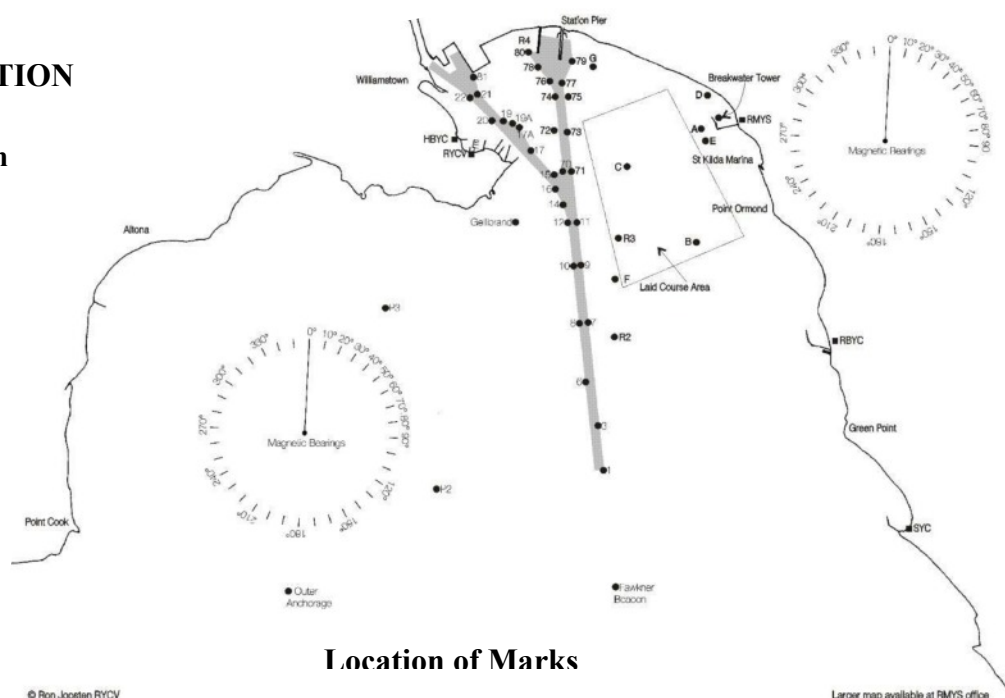
## 25 INSURANCE

25.1 Each participating boat shall be insured with valid third party liability insurance with a minimum cover of \$10,000,000 per event or the equivalent.

## 26 FURTHER INFORMATION

**CYAA Handicapper**  
**peter.costoloe@gmail.com**

[FYI Basic Sailing Rules](#)



**Classic Yacht Association of Australia (Victoria)**  
**2021 Winter Series 1 to 9 Course Descriptions for HBYC conducted races**      **Rev 5.0**  
July 5 2019

**Course No. 1**

**Approx. 7.5 Nautical miles**

**Start in a Southerly direction, leave Channel lateral mark 71 to Starboard, round mark R2 to Port, round RMYS D Mark to Port, round R4 to Port, then to finish line.**

**Course No. 2**

**Approx. 7.2 Nautical miles**

**Start in a Northerly direction, round channel lateral 74 to Starboard, round RMYS D mark to Starboard, round R3 to Starboard, round R4 to Port, then to finish line.**

**Course No. 3**

**Approx. 7.7 Nautical miles**

**Start in a Northerly direction, pass mark R4 to Starboard, round RMYS D mark to Starboard, round mark R2 to Starboard, leave channel lateral marks 9,11 and 71 to Port, then to finish line**

**Course No. 4**

**Approx. 7.6 Nautical miles**

**Start in an Easterly direction, round RMYS D mark to starboard, round mark R2 to starboard, leave channel lateral marks 9, 11, 71 to Port, round mark R4 to port, then to finish line.**

**Course No. 5**

**Approx. 7.7 Nautical miles**

**Start in a Westerly direction, round R4 to Port, leave channel lateral marks 9, 11, 71 to Starboard, round mark R2 to Port, RMYS D Mark to Port, then to finish line.**

**Course No. 6**

**Approx. 9.2 Nautical miles**

**Start in a Southerly direction, leave channel lateral marks 71 and 11 to Starboard, round mark R3 to Starboard, leave channel lateral marks 9 and 10 to Starboard, round pipeline mark P3 mark to Starboard, leave Gellibrand Shoal Mark and channel lateral mark 16 to Port, then to finish line.**

**Course No. 7**

**Approx. 9.6 Nautical miles**

**Start in a northerly direction, round mark R4 to Starboard, round RMYS C Mark to Starboard, leave channel lateral mark 16 and Gellibrand Shoal Mark to Starboard, round pipeline mark P3 to Starboard, leave Gellibrand Shoal Mark to Port, leave channel lateral mark 16 to Port, then to finish line.**

**Course 8**

**Approx. 8.3 Nautical miles**

**Start in a northerly direction, round mark R4 to Starboard, round RMYS D Mark to Starboard, through gate formed by race committee boat and the adjacent plain orange cylindrical mark, round mark R4 to Starboard, round RMYS D Mark to Starboard then to finish line.**

**Course 9**

**Approx. 8.3 Nautical miles**

**Start in an easterly direction, RMYS D Mark to Port, round mark R4 to Port, through gate formed by race committee boat and the adjacent plain orange cylindrical mark, then RMYS D Mark to Port, round mark R4 to Port then to finish line.**