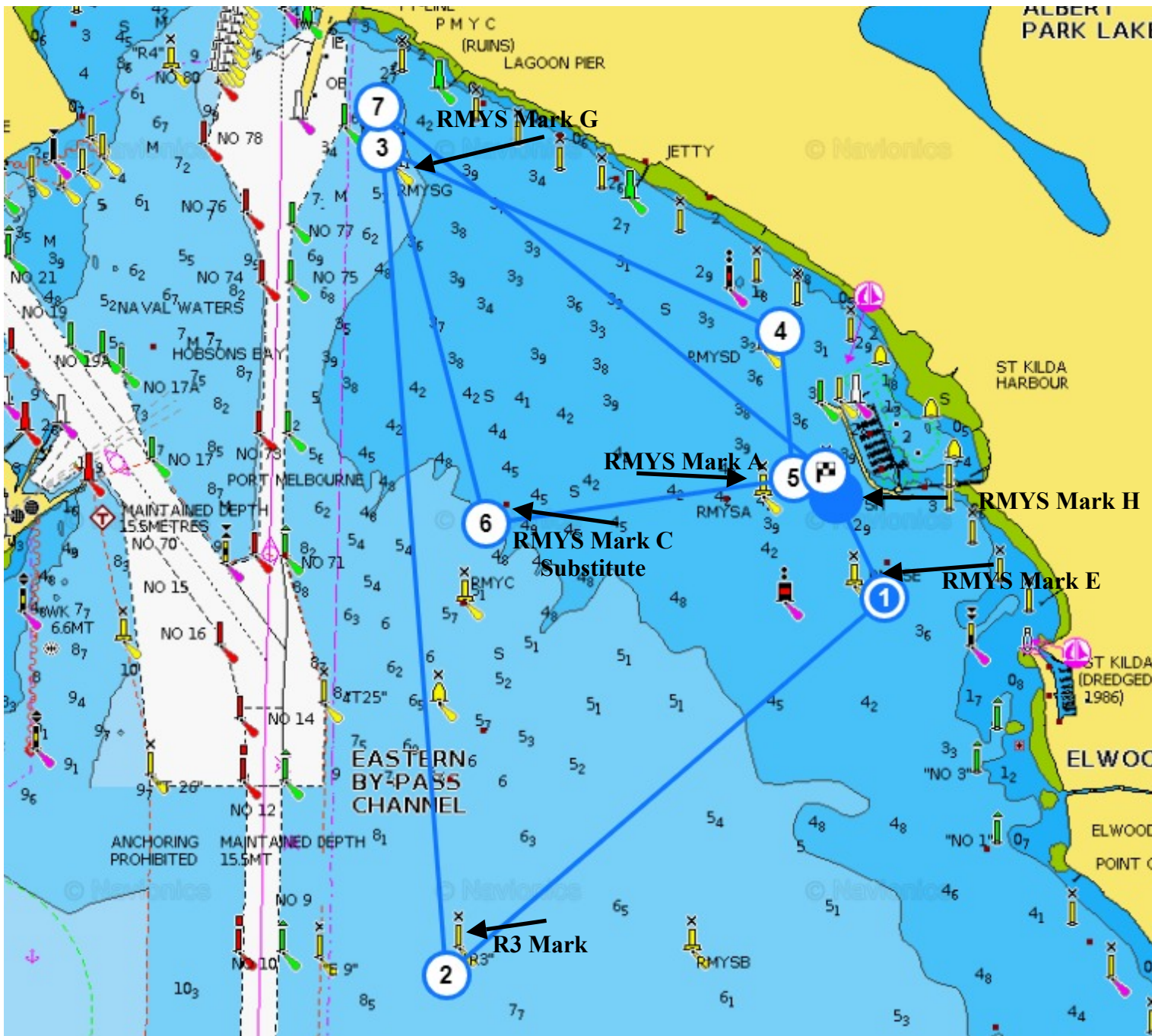


Race 6 Course 1



NOTE: Chart Track on map shows full Division Three course.



Course No. 1 Southerly start direction
Divisions One and Two



Approx. 5.9 Nautical miles

Start in a Southerly direction, round RMYS E Mark to Starboard, round R3 Mark to Starboard, Round RMYS Mark G to Starboard, round RMYS D Mark (substitute) to Starboard, then through finish line.

Course No. 1 Southerly start direction
Division Three



Approx. 9.6 Nautical Miles

Start in a Southerly direction, round RMYS E Mark to Starboard, round R3 Mark to Starboard, round RMYS Mark G to Starboard, round RMYS D Mark (substitute) to Starboard, round RMYS A Mark to Starboard, round RMYS Mark C (substitute) to starboard, round RMYS G Mark to Starboard then through finish line.

Race 6 Course 2



NOTE: Chart Track on map shows full Division Three course

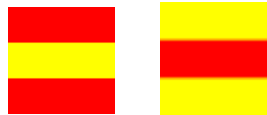


Course No. 2 Northerly start direction

Divisions one and two

Approx. 5.8 Nautical miles

Start in a Northerly direction, round RMYS Mark G to Port, round R3 Mark to Port, round RMYS Mark E to Port then through finish line.



Course No. 2

Division three

Approx. 10.6 Nautical Miles

Start in a Northerly direction, round RMYS Mark G to Port, round R3 Mark to Port, round RMYS Mark E to Port, Leave Mark A to Port, Round RMYS Mark G to Port, leave RMYS Mark A to Port, round RMYS Mark E to Port then through