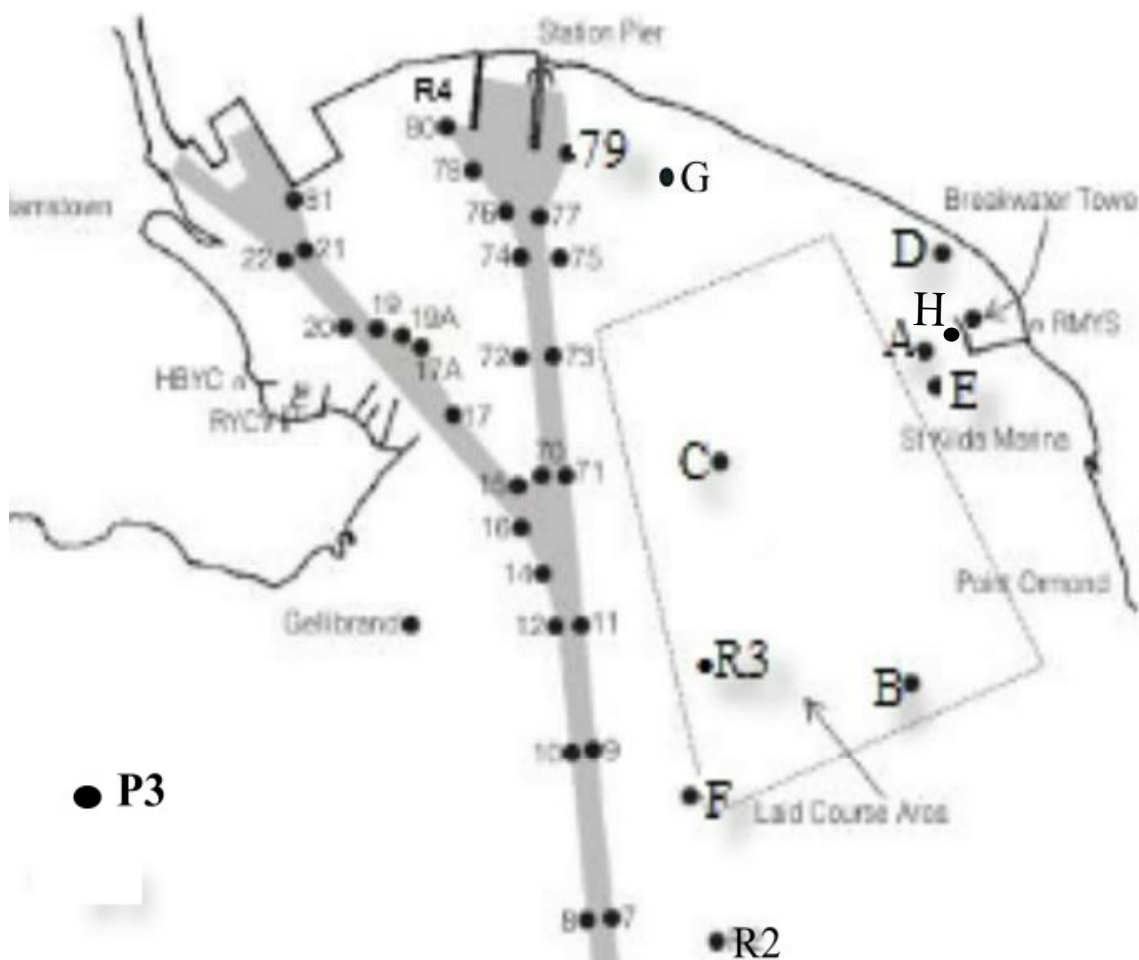


Location of RMYS Laid Marks



RMYS Club Marks

Each RMYS fixed mark is a yellow cylinder topped with a light and may be fitted with a St Andrew's Cross. They are designated A, B, C, D, E, F, G & H and carry the wording "RMYS Yachting Mark 03 9534 0227". The light sequence for these marks is Fl(4)Y.10s. Their approximate locations are listed in the following table.

RMYS MARKS

Mark Description Lat °S Long °E

RMYS A yellow + cross + light 37° 51.90' 144° 57.46'

RMYS B yellow + cross + light 37° 53.27' 144° 57.13'

RMYS C yellow + cross + light 37° 52.20' 144° 56.40'

RMYS D yellow + cross + light 37° 51.49' 144° 57.47'

RMYS E yellow + cross + light 37° 52.15' 144° 57.79'

RMYS F yellow + cross + light 37° 53.69' 144° 56.21'

RMYS G yellow + cross + light 37° 50.98' 144° 56.16'

RMYS H (distance mark) yellow + light 37° 51.86' 144° 57.69'