



# Classic Yacht Association

O F A U S T R A L I A

## SAILING INSTRUCTIONS CLASSIC YACHT ASSOCIATION of AUSTRALIA

### 2019/2020 SUMMER SERIES RACE SIX February 2<sup>nd</sup> 2020

The race will be conducted by the ROYAL MELBOURNE YACHT SQUADRON  
on behalf of the Classic Yacht Association of Australia Inc. A0034323W  
Vic Ports Corp. Melb. Aquatic Event Approval 54/2019  
Revision V1.4 Jan 30

#### 1 RULES.

The CYAA 2019/2020 Summer Series of races will be governed by:

- The Australian Sailing Racing Rules of Sailing (RRS 2017-2020).
- The Special Regulations and Prescriptions of Australia Sailing Part 1 For Racing Boats apply.
- The requirements of the Port of Melbourne Corporation (PoMC).  
<http://www.vicports.vic.gov.au/publications/Documents/hm-directions-10th-edition.pdf>
- The Marine Safety Act 2010 (Vic) and the Marine Safety Regulations 2012 (Vic).
- Any Skipper subject of a complaint by a Ship's Master for any reason whatsoever may be disqualified.
- AS Safety Category 6 shall apply. AS Safety Category 7 yachts may be accepted with the express permission of the Organizing Authority.
- Boats shall lodge an appropriate Safety Compliance Declaration with their home club for years 2019/2020.
- Crews on yachts without lifelines must wear PFD1 – Failure to do so will result in boats being scored DSQ.
- **RRS Rule 44.1 is changed. The two turns penalty is replaced by the one turn penalty**



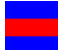
#### 2 NOTICES TO COMPETITOR.

- Notices to competitors will be posted to CYAA members via email and may be posted on the RYCV and RMYS official notice boards.
- **[RMYS Notice to Competitors 10 December 2019](#) Mark C has been replaced by nearby water quality mark.**
- **[RMYS Mark D replaced by substitute Mark 7<sup>th</sup> August 2019](#). Mark D in Maintenance. Replaced with Mark S**

#### 3 SCHEDULE OF RACE

- The scheduled time of the warning signal for Division one is **1025 hrs**. The warning signal for Division two (**1030 hrs**) and Division three (**1035 hrs.**) is the preceding division start signal.

#### 4 CLASS FLAG.

- The **division one class flag** for Race 6 will be the **Naval Numeral One**.  **Yacht Identification flag. White**
- The **division two class flag** for Race 6 will be the **Naval Numeral Two**.  **Yacht Identification flag. Yellow**
- The **division three class flag** for Race 6 will be the **Naval Numeral Three**  **Yacht Identification flag. Blue**

#### 4 THE START.

- The scheduled warning signal for Division one will be at 1025 hrs.
- Three or more starters shall constitute a race.
- The start line is between RMYS Mark A and the RMYS race control tower.
- The RMYS Mark H, is a clearance buoy, laid adjacent to the St. Kilda breakwater. Boats approaching the start line shall leave this mark on the same side RMYS Race control tower.
- All intending starters are required to SMS the RMYS Race Officer, Alistair Hart, on **0417 154 477** of their intention to start in Race 6 by 1015 hours. SMS to contain Boat Name & Sail Number, and XX POB (Persons on Board). No acknowledgement will be returned by RMYS Race Officer to the intention to Start. Intention to start SMS can be sent any time on the day prior to the 1015 hrs cut off time. Listed entrants that don't sign on will be scored DNS.
- The RMYS Race Director may provide Race 6 Course allocation and start time count down on VHF 72.

## **5 THE FINISH.**

- The Breakwater Finish shall be between the face of the RMYS Race Control tower and RMYS mark A. The RMYS Rescue vessel William Paterson may take finish times. RMYS Mark H is not part of the finish line.

## **6 RACING AREA.**

- Shall be the northern waters of Port Phillip adjacent to the RMYS Race control tower.

## **THE COURSES.**

- Selection of courses at the discretion of the RMYS race officer. Courses are listed in these Race 6 Sailing Instructions. These courses start and finish at the Breakwater.
- The allocated course will be signalled with numeral flags or numeral board, on the RMYS Race control tower when the committee goes on station.
- Division three entrants will sail an extra course leg after passing through the allocated course finish line.

## **8 TIME LIMIT.**

- The time limit for this race (Race 6) shall be 180 minutes for all divisions after their actual start. Boats crossing the finish line after this time will be scored DNF.
- At the expiry of the time limit, the Race Officer may advise on channel 72 that the time limit for the race has expired.

## **9 SHORTENING COURSE**

When code flag S is displayed on the RMYS Race control tower signal mast or Rescue Boat William Paterson, finish between the Mark A and the tower or between the adjacent rounding mark and the RMYS Race Committee vessel.

## **10 SCORING.**

- The scoring system is the “Low Point System with modifications in accordance with the Notice of Race.
- Each division will have a best on corrected time result.
- Series Aggregate Points will be allocated for the best corrected time performance based on each starter’s actual on course elapsed time after passing through the allocated course finish line for the first time.

## **11 SAFETY.**

- The race will start at the Race Directors discretion. The race will start at the Race Directors discretion. If the BOM early Sunday am for Port Phillip wind conditions forecasts 25 knots or more. the local weather station data, (Met Eye), for the northern waters of Port Phillip will be used as the guideline for a race start or postponement.
- The crew of boats that do not conform to AS Special Regulations Part 1 Section 3.12 (category 6 races included) shall wear Personal Flotation Devices (PFDs) at all times whilst racing. PFDs shall conform to AS Special Regulations Section 5.01.1.
- RMYS reminds competitors they are responsible for their own personal safety irrespective of signals made or not made.
- A boat that retires from a race is requested to notify the RMYS Race Control as soon as possible on VHF Channel 72. If the notification of retirement is not acknowledged, the competitor shall continue to endeavour to notify Race Control until acknowledgement is received. Any costs incurred in searching for competitors who retire but do not inform Race Control shall be borne by the competitor.

## **12 RADIO COMMUNICATION.**

- The RMYS Race Control tower will monitor VHF radio channel 72.
- Skippers are required to maintain a dual listening watch on VHF Channels 72, 12 and 16 before, during and after racing.
- Except in an emergency and before race sign on purposes, a boat shall neither make radio transmissions while racing nor receive radio communications not available to all boats. This restriction also applies to mobile telephones.
- All boats, without exception, shall carry a VHF radio capable of receiving and transmitting on Channels 16 and 72. Failure to do so may result in a boat being scored DSQ.
- If calls to the race committee on channel 72 receive no response VHF Channel 16 is to be used to establish communication and for switching over to an agreed working channel.

### 13 DISCLAIMER OF LIABILITY.

- Competitors participate in the race entirely at their own risk. See rule 4, Decision to Race.
- The organizing authority will not accept any liability for material damage or personal injury or death sustained in conjunction with or prior to, during, or after the regatta.

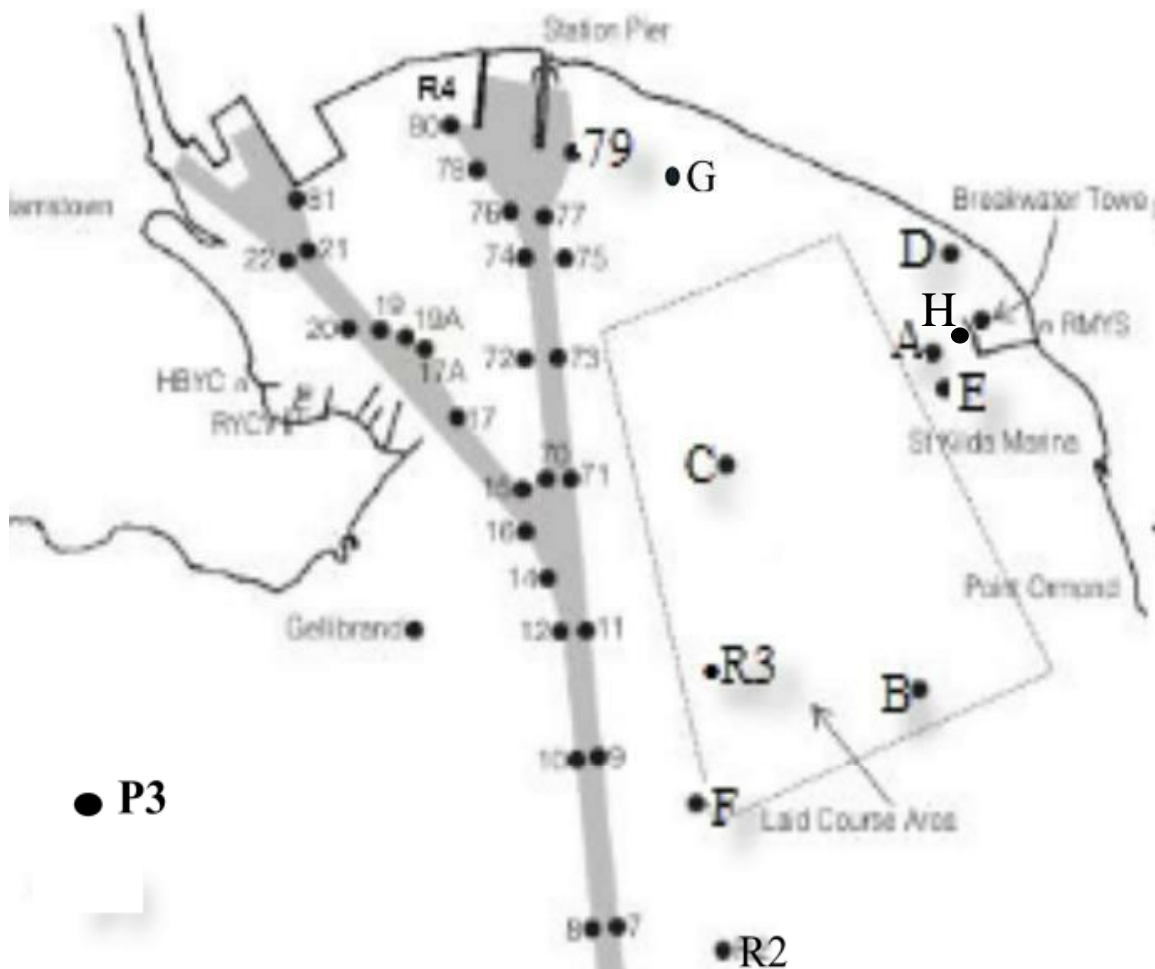
### 14 INSURANCE

- Each participating boat shall be insured with valid third party liability insurance with a minimum cover of \$10,000,000 per event.

### 15 SHIPPING

- All boats must give way to and keep well clear of shipping. If any shipping is in the vicinity, boats shall keep clear of shipping channels.
- A boat which is in danger of interfering with the passage of commercial shipping may use its engine for propulsion providing the engine is used only for as long as is necessary, full details for the incident are reported to the Race Committee and the boat is not advantaged in any way by the use of the engine.
- All skippers are reminded to keep a listening watch on VHF Channel 12, for shipping notices.

## Locations of RMYS Laid Marks





Classic Yacht Association  
O F A U S T R A L I A

**Classic Yacht Association of Australia (Victoria)  
2019/2020 Summer Series Course Descriptions for Race 6 Feb 2  
Conducted by Royal Melbourne Yacht Squadron**

Rev 1.2 29 Jan 2020

**RMYS Notice to Competitors issued 7<sup>th</sup> August 2019, and 11<sup>th</sup> December 2019 apply**



**Course No. 1 Southerly start direction**

**Divisions One and Two**

Approx. 5.9 Nautical miles

Start in a Southerly direction, round RMYS E Mark to Starboard, round R3 Mark to Starboard, round RMYS Mark G to Starboard, round RMYS D Mark (substitute) to Starboard, then through finish line.

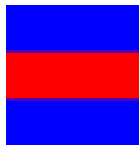


**Course No. 1 Southerly start direction**

**Division Three**

Approx. 9.6 Nautical Miles

Start in a Southerly direction, round RMYS E Mark to Starboard, round R3 Mark to Starboard, round RMYS Mark G to Starboard, round RMYS D Mark (substitute) to Starboard, round RMYS A Mark to Starboard, round RMYS Mark C (substitute) to starboard, Round RMYS G Mark to Starboard then through finish line.



---

**Course No. 2 Northerly start direction**

**Divisions one and two**

Approx. 5.8 Nautical miles

Start in a Northerly direction, round RMYS Mark G to Port, round R3 Mark to Port, round RMYS Mark E to Port then through finish line.



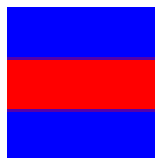
**Course No. 2**

**Division three**

Approx. 10.6 Nautical Miles

Start in a Northerly direction, round RMYS Mark G to Port, round R3 Mark to Port, round RMYS Mark E to Port, Leave Mark A to Port, Round RMYS Mark G to Port, leave RMYS Mark A to Port, round RMYS Mark E to Port then through finish line.

---



# Race 6 Course 1



NOTE: Chart Track on map shows full Division Three course



## Course No. 1 Southerly start direction

Divisions One and Two

Approx. 5.9 Nautical miles

Start in a Southerly direction, round RMYS E Mark to Starboard, round R3 Mark to Starboard, Round RMYS Mark G to Starboard, round RMYS D Mark (substitute) to Starboard, then through finish line.

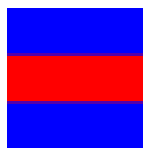


## Course No. 1 Southerly start direction

Division Three

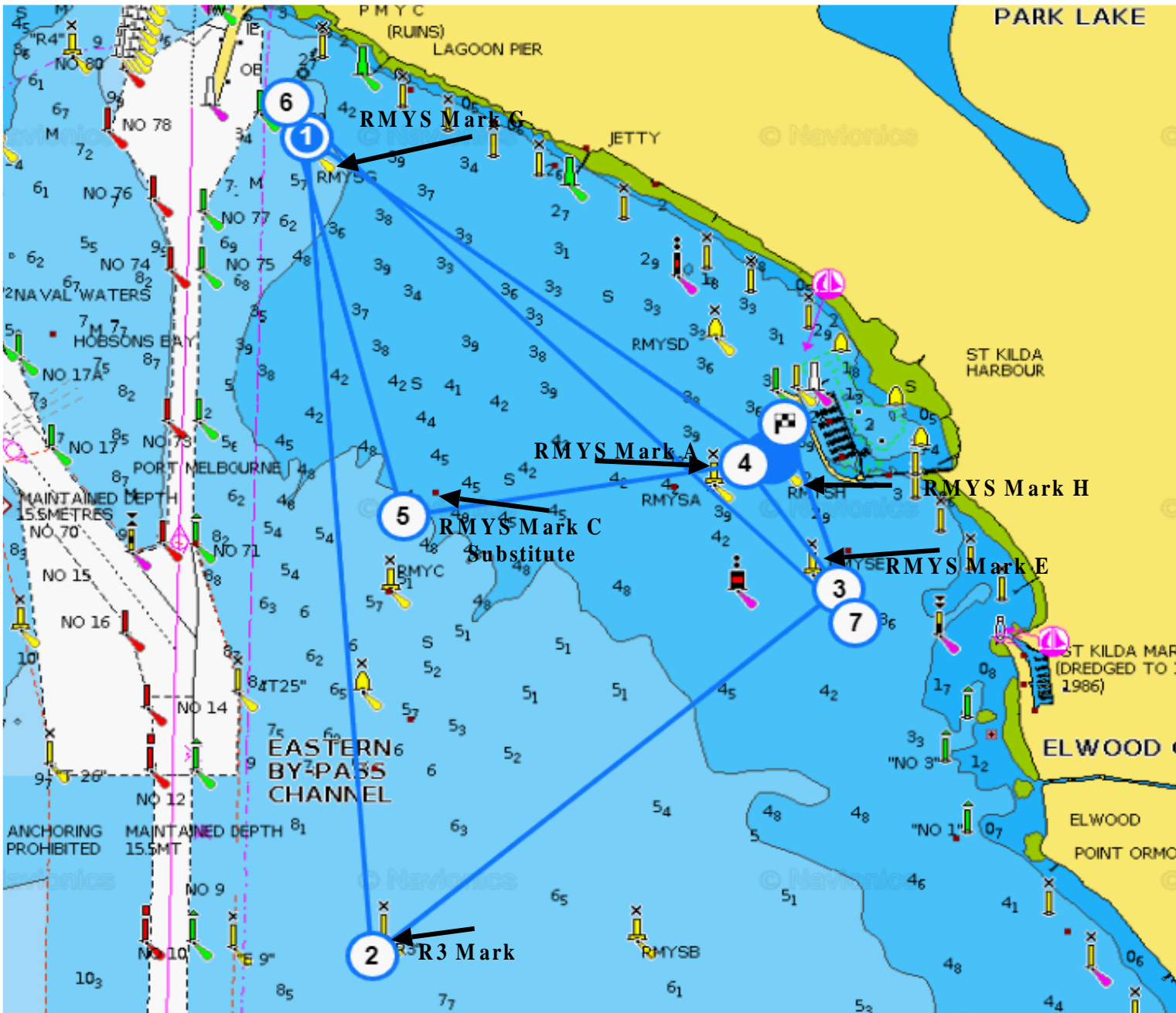
Approx. 9.6 Nautical Miles

Start in a Southerly direction, round RMYS E Mark to Starboard, round R3 Mark to Starboard, round RMYS Mark G to Starboard, round RMYS D Mark (substitute) to Starboard, round RMYS A Mark to Starboard, round RMYS Mark C (substitute) to starboard, round RMYS G Mark to Starboard then through finish line.





# Race 6 Course 2



NOTE: Chart Track on map shows full Division Three course.



## Course No. 2 Northerly start direction

### Divisions one and two

Approx. 5.8 Nautical miles

Start in a Northerly direction, round RMYS Mark G to Port, round R3 Mark to Port, round RMYS Mark E to Port then through finish line.



## Course No. 2

### Division three

Approx. 10.6 Nautical Miles

Start in a Northerly direction, round RMYS Mark G to Port, round R3 Mark to Port, round RMYS Mark E to Port, Leave Mark A to Port, Round RMYS Mark G to Port, leave RMYS Mark A to Port, round RMYS Mark E to Port then through finish line.

