

**Note:** • QR codes for personal contact tracing registration and for skippers to notify the RMYS Race Officer by SMS their boat is racing and PoB sign in for Race 2 are displayed on the last page of these Race Two Sailing Instructions.

• Yachting Victoria has issued updated advice from the Vic Premier dated Nov 22 informing masks and social distancing no longer required when sailing. Covid-19 compliant face masks must be carried by all crew at all times.

• Common use equipment must be wiped down after use.

## SAILING INSTRUCTIONS

### CLASSIC YACHT ASSOCIATION of AUSTRALIA

#### 2020/2021 SUMMER SERIES

#### RACE TWO 29<sup>th</sup> November

Race Two will be conducted by the ROYAL MELBOURNE YACHT SQUADRON on behalf of the Classic Yacht Association of Australia Inc. A0034323W Vic Ports Corp. Melb. Aquatic Event Approval 56-2020 SI's Revision V1.0 Issued Nov 26 2020

#### 1 RULES.

The CYAA 2020/2021 Summer Series of races will be governed by:

- The Australian Sailing Racing Rules of Sailing (RRS 2017-2020).
- The Special Regulations and Prescriptions of Australia Sailing Part 1 For Racing Boats apply.
- The [requirements of the Port of Melbourne Corporation](#) (PoMC).
- The Marine Safety Act 2010 (Vic) and the Marine Safety Regulations 2012 (Vic).
- Any Skipper subject of a complaint by a Ship's Master for any reason whatsoever may be disqualified.
- AS Safety Category 6 shall apply. AS Safety Category 7 yachts may be accepted with the express permission of the Organizing Authority.
- Boats shall lodge an appropriate Safety Compliance Declaration with their home club for years 2020/2021.
- Crews on yachts without lifelines must wear PFD1 – Failure to do so will result in boats being scored DSQ.
- **RRS Rule 44.1 is changed. The two turns penalty is replaced by the one turn penalty**

#### 2 NOTICES TO COMPETITOR.

- Notices to competitors will be posted to CYAA members via email and may be posted on the RMYS official notice boards.

#### 3 SCHEDULE OF RACE

- The scheduled time of the warning signal for Race Two is **1025** hrs.

#### 4 CLASS FLAG.

- The class flag for Race Two is the CYAA pennant.

#### 5. THE START.

- The scheduled warning signal for Race Two will be at 1025 hrs.
- Three or more starters shall constitute a race.
- The start line is between RMYS Mark A and the RMYS race control tower.
- The RMYS Mark H, is a clearance buoy, laid adjacent to the St. Kilda breakwater. Boats approaching the start line shall leave this mark on the same side RMYS Race control tower.
- All intending Race Two starters are required to SMS the RMYS Race Officer, Alistair Hart, on **0417 154 477** of their intention to start in Race Two by 1015 hours. SMS to contain Boat Name, Sail Number, and XX POB (Persons on Board). No acknowledgement will be returned by RMYS Race Officer to the intention to Start. Intention to start SMS can be sent any time on the day prior to the 1015 hrs cut off time. Listed entrants that don't sign on will be scored DNS.
- The RMYS Race Director may provide start time count down on VHF 72.

**NOTE:** A new start box display has been attached to the RMYS tower. This box will now start the races and is a combination of lights and large digital number. This method of starting a race will be used for all RMYS run races from the tower. If the tower is without power starting will revert to flags as per the RMYS SI's v6.0 A printable [RMYS Start Procedure document](#) can be accessed via this link.

## **6. THE FINISH.**

- The Breakwater Finish shall be between the face of the RMYS Race Control tower and RMYS mark A. RMYS Mark H is not part of the finish line.

## **7. RACING AREA.**

- Shall be the northern waters of Port Phillip adjacent to the RMYS Race control tower.

## **8. THE COURSES.**

- RMYS Courses 5 - 12 as described in [RMYS Sailing Instructions 2018-2020 \(V0.4\)](#) Page 23 will be used. These courses are described on page 3 of these Sailing Instructions.
- Selection of courses is at the discretion of the RMYS race officer.
- The allocated course will be signalled with numeral flags and digital numeral board, on the RMYS Race control tower when the committee goes on station.

## **9. TIME LIMIT**

- The time limit for this race (Race Two) shall be 180 minutes after the actual start. Boats crossing the finish line after this time has expired will be scored DNF.
- At the expiry of the time limit, the Race Officer may advise on channel 72 that the time limit for the race has expired.

## **10. SHORTENING COURSE**

- When code flag S is displayed on the RMYS Race control tower signal mast or RMYS Rescue Boat, finish between the Mark A and the tower or between the adjacent rounding mark and the RMYS Race Committee vessel.

## **11. SCORING.**

- The scoring system is the “Low Point System with modifications in accordance with the Notice of Race.
- Series Aggregate Points will be allocated for the best corrected time performance based on each starter’s actual on course elapsed time after passing through the allocated course finish line for the first time.

## **12. SAFETY.**

- The race will start at the Race Directors discretion. If the BOM early Sunday am for Port Phillip wind conditions forecasts 25 knots or more. the local weather station data, (Met Eye), for the northern waters of Port Phillip will be used as the guideline for a race start or postponement.
- The crew of boats that do not conform to AS Special Regulations Part 1 Section 3.12 (category 6 races included) shall wear Personal Flotation Devices (PFDs) at all times whilst racing. PFDs shall conform to AS Special Regulations Section 5.01.1.
- RMYS reminds competitors they are responsible for their own personal safety irrespective of signals made or not made.
- A boat that retires from a race is requested to notify the RMYS Race Control as soon as possible on VHF Channel 72. If the notification of retirement is not acknowledged, the competitor shall continue to endeavour to notify Race Control until acknowledgement is received. Any costs incurred in searching for competitors who retire but do not inform Race Control shall be borne by the competitor.

## **13. RADIO COMMUNICATION.**

- The RMYS Race Control tower will monitor VHF radio channel 72.
- Skippers are required to maintain a dual listening watch on VHF Channels 72, 12 and 16 before, during and after racing.
- Except in an emergency and before race sign on purposes, a boat shall neither make radio transmissions while racing nor receive radio communications not available to all boats. This restriction also applies to mobile telephones.
- All boats, without exception, shall carry a VHF radio capable of receiving and transmitting on Channels 16 and 72. Failure to do so may result in a boat being scored DSQ.
- If calls to the race committee on channel 72 receive no response VHF Channel 16 is to be used to establish communication and for switching over to an agreed working channel.

## **14. DISCLAIMER OF LIABILITY.**

- Competitors participate in the race entirely at their own risk. See rule 4, Decision to Race.
- The organizing authority will not accept any liability for material damage or personal injury or death sustained in conjunction with or prior to, during, or after the regatta.

## **15. INSURANCE**

- Each participating boat shall be insured with valid third party liability insurance with a minimum cover of \$10,000,000 per event.

## 16. SHIPPING

- All boats must give way to and keep well clear of shipping. If any shipping is in the vicinity, boats shall keep clear shipping channels.
- A boat which is in danger of interfering with the passage of commercial shipping may use its engine for propulsion providing the engine is used only for as long as is necessary, full details for the incident are reported to the Race Committee and the boat is not advantaged in any way by the use of the engine.
- All skippers are reminded to keep a listening watch on VHF Channel 12, for shipping notices.

## RMYS COURSES

No.	Course	Side	Approx Dist.(nm)
5	Start D C B A B finish	Port	6.9
6	Start B C D A B A D finish	Starboard	7.7
7	Start B C D A B C D finish	Starboard	8.3
8	Start D C B A D C B finish	Port	8.3
9	Start G C E A G A E finish	Port	7.6
10	Start R2 C D A B A D finish	Starboard	10.3
11	Start D C R2 A D A B finish	Port	10.3
12	Start D GB(S) P3 R2 finish	Port*	10.3

### Note:

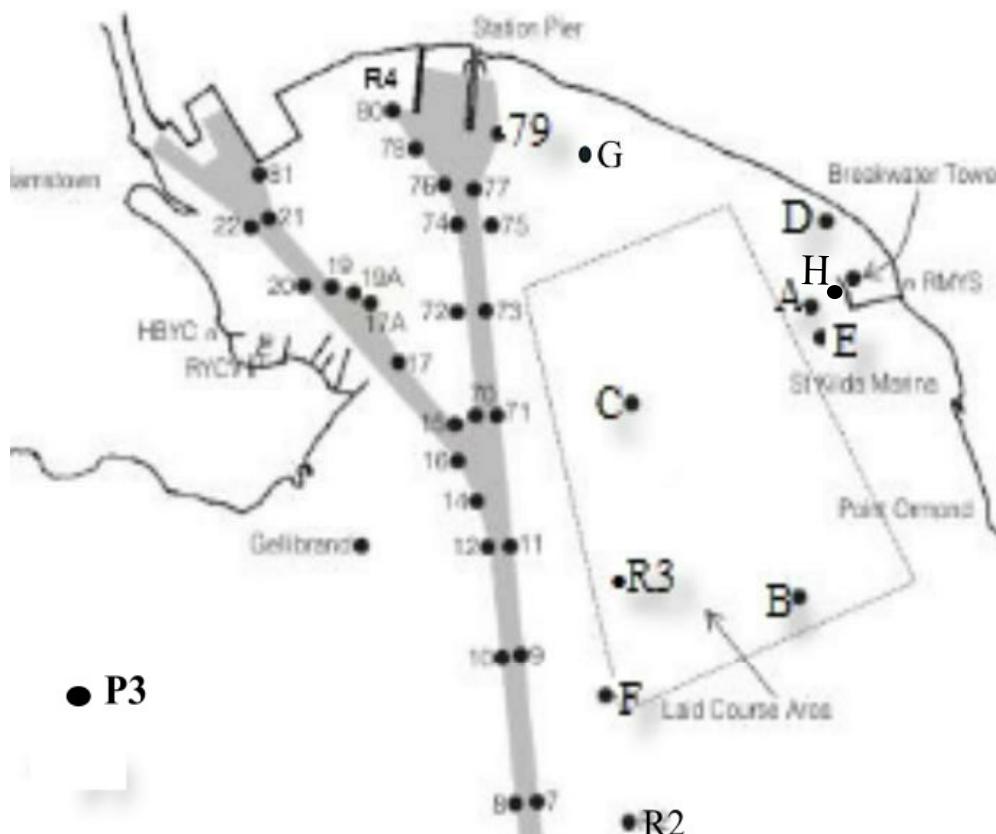
1. P and S are used below in the 'Course' and 'Side' columns to indicate that a mark should be left to Port or Starboard respectively. An asterisk "\*" in the 'Side' column indicates that all marks should be passed on the given side except where otherwise specified in the Course.

2. Mark names enclosed in square brackets (eg. [A], [GB] or [FWK]) must be passed on the correct side but are not rounding marks for the purposes of RRS 28.2(b).

**A boat shall leave mark A on the same side as the Race Control Tower unless otherwise specified in the course.**

**Don't sail through finish line unless finishing This changes RRS 28.1.**

## Locations of RMYS Laid Marks



# **CYAA (Vic) 2020/2021 Summer Series**

## **Race Two QR Codes**

**Personal Contact Trace Register sign in and sign out**

**Details can be registered anytime before boat departs home club to race**

**Contact details are stored for 30 days for use on subsequent sign in's**



**Race Two Personal SIGN IN**



**Race Two Personal SIGN OUT**

**Race Two QR codes for Skippers only**

**Classic Yacht intent to race and Persons on Board register.**

**Can be sent any time before 10:15 am 29<sup>th</sup> Nov.**



**Race Two SIGN IN  
Boat racing and PoB  
Send before 10:15 am**



**Race Two SIGN OUT  
After boat returns to home club**