



Classic Yacht Association

O F A U S T R A L I A

SAILING INSTRUCTIONS CLASSIC YACHT ASSOCIATION of AUSTRALIA

2019/2020 SUMMER SERIES RACE SEVEN February 16th 2020

The race will be conducted by the Hobsons Bay Yacht Club
on behalf of the Classic Yacht Association of Australia Inc. A0034323W
Vic Ports Corp. Melb. Aquatic Event Approval 54/2019
Revision V1.0 Feb 13 2020

1 RULES.

The CYAA 2019/2020 Summer Series of races will be governed by:

- The Australian Sailing Racing Rules of Sailing (RRS 2017-2020).
- The Special Regulations and Prescriptions of Australia Sailing for Racing Boats apply.
- The requirements of the Port of Melbourne Corporation (PoMC).
<http://www.vicports.vic.gov.au/publications/Documents/hm-directions-10th-edition.pdf>
- The Marine Safety Act 2010 (Vic) and the Marine Safety Regulations 2012 (Vic).
- Any Skipper subject of a complaint by a Ship's Master for any reason whatsoever may be disqualified.
- AS Safety Category 6 shall apply. AS Safety Category 7 yachts may be accepted with the express permission of the Organizing Authority.
- Boats shall lodge an appropriate Safety Compliance Declaration with their home club for years 2019/2020.
- Crews on yachts without lifelines must wear PFD1 – Failure to do so will result in boats being scored DSQ.
- **RRS Rule 44.1 is changed. The two turns penalty is replaced by the one turn penalty**




2 NOTICES TO COMPETITOR.

- Notices to competitors will be posted to CYAA members via email and may be posted on the RYCV and RMYS official notice boards. RMYS NTC's Feb 8 still operative Feb 8 2020.
- **Mark R3 Missing** No Notice competitors issued.
- **[RMYS Notice to Competitors 11 Feb 2020](#) Mark B now back in place**
- **[RMYS Notice to Competitors 10 December 2019](#) Mark C has been replaced by nearby water quality mark**
Substitute Mark C location 37.52.480 S 144.56.310 E. This substitute mark C no longer has the fixed yellow X diagonal fins on top of mark.
- **[RMYS Mark D replaced by substitute Mark S 7th August 2019.](#) Mark D in Maintenance. Replaced with Mark S**
- **Race 7 Special Orange Inflatable Mark. Located in vicinity of Kerford Road Pier 37° 51.200' South 144° 56.850' East.**

3 SCHEDULE OF RACE

- The scheduled time of the warning signal for Division One is 1025 hrs. The warning signal for Division Two (1030 hrs) and Division Three (1035 hrs.) is the preceding division start signal.

4 CLASS FLAG.

- The **Division One class flag** for Race 7 will be the **Naval Numeral One**.  **Yacht Identification flag. White**
- The **Division Two class flag** for Race 7 will be the **Naval Numeral Two**.  **Yacht Identification flag. Yellow**
- The **Division Three class flag** for Race 7 will be the **Naval Numeral Three**  **Yacht Identification flag. Blue**

5 THE START.

- The scheduled warning signal for Division One will be at 1025 hrs.
- The HBYC start line will be in the area bounded by RMYS Mark C, RMYS Mark G and Port of Melbourne channel lateral mark 74.
- The START line is a line between the signal mast on the HBYC Committee Boat, displaying a 'On Station' orange flag, and a plain orange cylindrical mark.
- All intending starters are required to SMS the HBYC Race Officer, Alistair Hart, on **0417 154 477** of their intention to start in Race 7 by 1015 hours. SMS to contain Boat Name & Sail Number, and XX POB (Persons on Board). No

acknowledgement will be returned by RMYS Race Officer to the intention to Start. Intention to start SMS can be sent any time on the day prior to the 1015 hrs cut off time. Listed entrants that don't sign on will be scored DNS.

- The HBYC Race Director may provide Race 7 Course allocation at 1015 hrs and start time count down on VHF 69.

6 THE FINISH.

- The FINISH line is a line between the signal mast on the "On Station" Committee Boat, displaying a blue flag, and a plain orange cylindrical mark.

7 RACING AREA.

- Shall be the northern waters of Port Phillip or Hobsons Bay.
- Selection of racing area is at the discretion of the race officer.

8 COURSES.

- The allocated course for HBYC conducted CYAA races, as attached to this document, will be signalled with numeral flags, on the HBYC committee boat, when the committee vessel goes on station.
- Division three entrants will sail an extra course leg after passing through the Division 1 and 2 finish line.

9 TIME LIMIT.

- The time limit for this race (Race 7) shall be 180 minutes for all divisions after their actual start. Boats crossing the finish line after this time will be scored DNF.
- At the expiry of the time limit, the Race Officer may advise on channel 69 that the time limit for the race has expired.

10 SHORTENING COURSE

- When code flag S is displayed on the HBYC race committee vessel signal mast or on the HBYC Rescue Boat Shirley Freeman,, finish between the adjacent mark and the RMYS Race Committee vessel or the HBYC Rescue Boat Shirley Freeman.

11 SCORING.

- The scoring system is the "Low Point System with modifications in accordance with the Notice of Race.
- Each division will have a best on corrected time result.
- Series Aggregate Points will be allocated for the best corrected time performance based on each starter's actual on course elapsed time after passing through the allocated course finish line for the first time.

12 SAFETY.

- The race will start at the Race Directors discretion. If the BOM early Sunday am for Port Phillip wind conditions forecasts 25 knots or more. the local weather station data, (Met Eye), for the northern waters of Port Phillip will be used as the guideline for a race start or postponement.
- The crew of boats that do not conform to AS Special Regulations Part 1 Section 3.12 (category 6 races included) shall wear Personal Flotation Devices (PFDs) at all times whilst racing. PFDs shall conform to AS Special Regulations Section 5.01.1.
- HBYC reminds competitors they are responsible for their own personal safety irrespective of signals made or not made.
- A boat that retires from a race is requested to notify the HBYC Race Committee as soon as possible on VHF Channel 69. If the notification of retirement is not acknowledged, the competitor shall continue to endeavour to notify Race Control until acknowledgement is received. Any costs incurred in searching for competitors who retire but do not inform Race Control shall be borne by the competitor.

13 RADIO COMMUNICATION.

- The HBYC Race Committee will monitor VHF radio channel 69.
- Skippers are required to maintain a dual listening watch on VHF Channels 69, 12 and 16 before, during and after racing.
- Except in an emergency and after the race sign on cut off time, a boat shall neither make radio transmissions while racing nor receive radio communications not available to all boats. This restriction also applies to mobile telephones.
- All boats, without exception, shall carry a VHF radio capable of receiving and transmitting on Channels 16 and 69. Failure to do so may result in a boat being scored DSQ.
- If calls to the race committee on channel 69 receive no response VHF Channel 16 is to be used to establish communication and for switching over to an agreed working channel.

14 DISCLAIMER OF LIABILITY.

- Competitors participate in the race entirely at their own risk. See AS RRS 2017-2020 Rule 4, Decision to Race.
- The organizing authority will not accept any liability for material damage or personal injury or death sustained in conjunction with or prior to, during, or after the regatta.

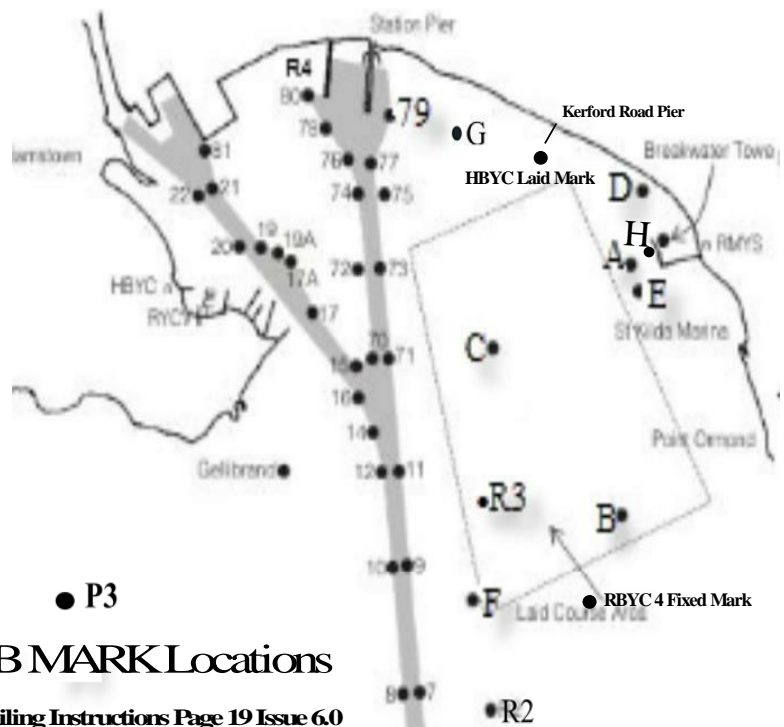
15 INSURANCE

- Each participating boat shall be insured with valid third party liability insurance with a minimum cover of \$10,000,000 per event.

16 SHIPPING

- All boats must give way to and keep well clear of shipping. If any shipping is in the vicinity, boats shall keep clear of shipping channels.
- A boat which is in danger of interfering with the passage of commercial shipping may use its engine for propulsion providing the engine is used only for as long as is necessary, full details for the incident are reported to the Race Committee and the boat is not advantaged in any way by the use of the engine.
- All skippers are reminded to keep a listening watch on VHF Channel 12, for shipping notices.

Locations of Laid Marks used for Race Courses



CLUB MARK Locations

Extract from RMYS Sailing Instructions Page 19 Issue 6.0

Each RMYS fixed mark is a yellow cylinder topped with a light and may be fitted with a St Andrew's Cross. They are designated A, B, C, D, E, F, G & H and carry the wording "RMYS Yachting Mark 03 9534 0227". The light sequence for these marks is Fl(4)Y.10s. Their approximate locations are listed in the following table.

RMYS MARKS

Mark Description Lat °S Long °E

RMYS A yellow + cross + light 37° 51.90' 144° 57.46'

RMYS B yellow + cross + light 37° 53.27' 144° 57.13'

RMYS C yellow + cross + light 37° 52.20' 144° 56.40' Substitute Mark location **37.52.480 S 144.56.310 E**

RMYS D yellow + cross + light 37° 51.49' 144° 57.47'

RMYS E yellow + cross + light 37° 52.15' 144° 57.79'

HBYS Special Laid Mark

0.2 nm seaward off Kerford Pier Vicinity
Inflatable Orange Mark 37° 51.200'S 144° 56.850'E

RBYS MARK

RBYS 4 Yellow Pyramid 37° 53.61' S 144° 57.08' E



Classic Yacht Association of Australia (Victoria) 2019/2020 Summer Series Race 7 Course Descriptions

Rev 1.0 11/02/2020

RMYS Notice to Competitors issued [7th August 2019 Mark D](#), [11th December 2019 Mark C](#) and [11 Feb 2020 Mark B](#) apply



Division One



Division Two



Division Three

Course No. 1 Northerly start direction



Divisions One and Two

Approx. 7.4 Nautical miles

Start in a Northerly direction, round R4 Mark to Starboard, round laid orange HBYC Mark in vicinity of Kerford Road Pier to starboard, round RBYC Mark 4 to Starboard, then through finish line in a northerly direction.

Course No. 1 Northerly start direction

Division Three

Approx. 10.8 Nautical Miles

Start in a Northerly direction, round R4 Mark to Starboard, , round laid orange HBYC Mark in vicinity of Kerford Road Pier to Starboard, round RBYC Mark 4 to Starboard, , leave committee boat to Starboard, round laid orange HBYC Mark in vicinity of Kerford Road Pier to Starboard, round RMYS Mark C substitute to Starboard, then through finish line in a northerly direction.

Course No. 2 Southerly start direction



Divisions One and Two

Approx. 7.4 Nautical miles

Start in a Southerly direction, round RBYC Mark 4 to Port, round laid orange HBYC Mark in vicinity of Kerford Road Pier to Port round R4 Mark to Port, then through finish line in a southerly direction.

Course No. 2 Southerly start direction

Division Three

Approx. 10.1 Nautical miles

Start in a Southerly direction, round RBYC Mark 4 to Port, round laid orange HBYC Mark in vicinity of Kerford Road Pier to Port round R4 Mark to Port, pass through Division 1&2 finish line with committee boat to Port, round laid orange HBYC Mark in vicinity of Kerford Road Pier to Port, round RMYS Mark G to Port, then through finish line in a southerly direction.

Click [HERE](#) for Race 7 course maps and descriptions