

CYAA Class flag for Race 4
Tango (T)

Note:

All CYAA Race 3 skippers are required to submit to SYC a completed SYC crew declaration 15 minutes prior to starting Race 3

<https://syc.com.au/crew-declaration/>

CLASSIC YACHT ASSOCIATION of AUSTRALIA

SUMMER SERIES 2019/2020

RACE THREE on November 10

The race will be conducted by the SANDRINGHAM YACHT CLUB on behalf of the Classic Yacht Association of Australia Inc. A0034323W
Vic Ports Corp.(Melb.) Aquatic Event Approval 54/2019 applies

AMENDMENT 1 NOV 8 Para 8, 8.1 & 8.3 Words WINDWARD GATE changed to WINDWARD MARK

Race Committee Vessel name is changed from ENDEAVOUR IV to BOONORONG

1 ORGANISING AUTHORITY

The Organising Authority is Sandringham Yacht Club Inc. A 11997

2 RULES

2.1 This CYAA 2019/2020 Summer Series Race 3 will be governed by the current rules as defined in the Racing Rules of Sailing (RRS), Prescriptions and Special Regulations of the Australian Sailing (AS) and SYC Sailing Instructions.

2.2 RRS Rule 44.1 is changed so that the two turns penalty is replaced by the one turn penalty.

2.3 Attention is drawn to RRS4, Decision to Race: "The responsibility for a boats decision to participate in a race or to continue racing is hers alone.

3 SAFETY

3.1 The safety category applicable to this Series is AS Category 6. AS Safety Category 7 yachts may be accepted with the express permission of the Organizing Authority.

3.2 Crews on yachts without lifelines must wear PFD1 – Failure to do so will result in boats being scored DSQ.

3.3 The race will start at the Race Directors discretion. A consistent wind speed of 25 knots or greater or if a GALE Warning is current. BOM early am scheduled forecast and local weather station data will be used as the guideline for upper limit of sea conditions leading to a race postponement.

3.4 The crew of boats that do not conform to AS Special Regulations Part 1 Section 3.12 (category 6 races included) shall wear Personal Flotation Devices (PFDs) at all times whilst racing. PFDs shall conform to YA Special Regulations Section 5.01.1

3.5 SYC recommends that all competitors wear an approved personal flotation device (PFD) whilst racing.

3.6 A boat that retires from a race is requested to notify the SYC Race Control as soon as possible by calling the SYC Race Committee vessel on VHF Channel 77. If the notification of retirement is not acknowledged, the competitor shall continue to endeavour to notify Race Control until acknowledgement is received. Any costs incurred in searching for competitors who retire but do not inform Race Control shall be borne by the competitor.

4 CLASS FLAGS

4.1 The Class flag for Classic yachts race 3, scheduled for warning signal at 1025 hrs, will be the International code flag Tango (T).

5 RACING AREA

5.1 Racing is conducted on the waters of Port Phillip. Race start line will be in the vicinity seaward of the mark SYC 4

5.2 Boats shall not sail at any time within the following areas, which are designated as foul ground.

5.2.1 The area between the Sandringham Breakwater and the Breakwater Light.

5.2.2 The area between the Breakwater and SYC 8.

5.2.3 The area between the two Anonyma Piles.

6 THE START

6.1 The scheduled warning signal for CYAA 2019/2020 Summer Series Race 3 is 1025 hrs Nov.10

6.2 The race shall be started in accordance with RRS26.

6.3 The SYC Committee boat will display the course number allocated for the race will be displayed by international code flags on the signal mast of the SYC Race Committee vessel, **Boonoorong**. The course will be announced before the start on VHF 77. **Boonoorong** will be stationed West of the SYC Race tower and slightly to the north of the line between SYC 4 and the SYC Race tower.

6.4 The Race committee vessel will use a horn and a radio based warning and start time count down on VHF Channel 77 will be used as part of the race starting signals.

6.5 Times shall be taken from the visual signals.

6.6 A boat shall not start more than ten (10) minutes after its starting signal.

7 START LINE

7.1 ***SYC Race Committee vessel***

7.2 The start line will be between the sighting indicator in the Race Committee vessel **Boonoorong** and an orange floating mark.

7.3 A crowding mark may be laid adjacent to the race committee vessel. When laid, boats approaching the line to start shall leave the crowding mark on the same required side as the Race Committee Vessel

8 WINDWARD MARK

8.1 A windward mark designated by an orange inflatable bouy will be laid approximately 0.5 nm to windward of the start line

8.2 The magnetic course to the windward gate will be indicated by the Race committee vessel **Boonoorong**

8.3 The windward mark must be rounded in the same direction as the start line was crossed and rounded before starting to sail the allocated course.

9 SHORTEN COURSE

9.1 Courses may be shortened in accordance with RRS 32

10 FINISH LINE

10.1 ***SYC Race Control Tower***

10.2 The finish line will be between the sighting indicators on the Race Control Tower and mark SYC 4.

11 TIME LIMIT

11.1 The time limit for this race (Race 3) shall be 180 minutes after the actual start. All other boats crossing the finish line after this time will be scored DNF.

11.2 At the expiry of either time limit, the Race Officer may advise on channel 77 that the time limit for the race has expired.

12 RADIO COMMUNICATIONS

12.1 VHF Channel 77 is the designated radio channel for Race 4. All boats shall carry a VHF radio and monitor the designated VHF Radio Channel 77 for the duration of Race 3. The call sign of the SYC Race Committee vessel used to conduct race 3 is **SYC Boonoorong** or the designated substitute vessel

12.2 Boats are required to have their VHF radio on standby on the calling and distress frequency, Channel 16, in the event that they may be able to assist in an emergency. The call sign of Sandringham

Yacht Club Tower is "Sandringham Tower" and the VHF calling frequency is Channel 77.

13 PROTESTS AND REQUESTS FOR REDRESS

13.1 Protests shall be made in writing on the official AS protest form and lodged with the racing committee within 90 minutes of the finish of the last boat in the last race of the day. Forms are available at the SYC Boating Office.

13.2 A boat requesting redress shall notify the SYC Race Committee within 90 minutes after the finish of the last boat in the last race of the day.

13.3 A protest or redress hearing shall be scheduled as soon as practicable.

13.4 A request for reopening a hearing shall be delivered no later than 30 minutes after the party requesting reopening was informed of the decision on that day.

13.5 A protest re-opening shall be heard as soon as practicable. This changes Rule 66.

14 SYC CLUB COURSES

General

Marks shall be rounded (or passed, where so noted) in the order described and leaving each mark on the required side as nominated.

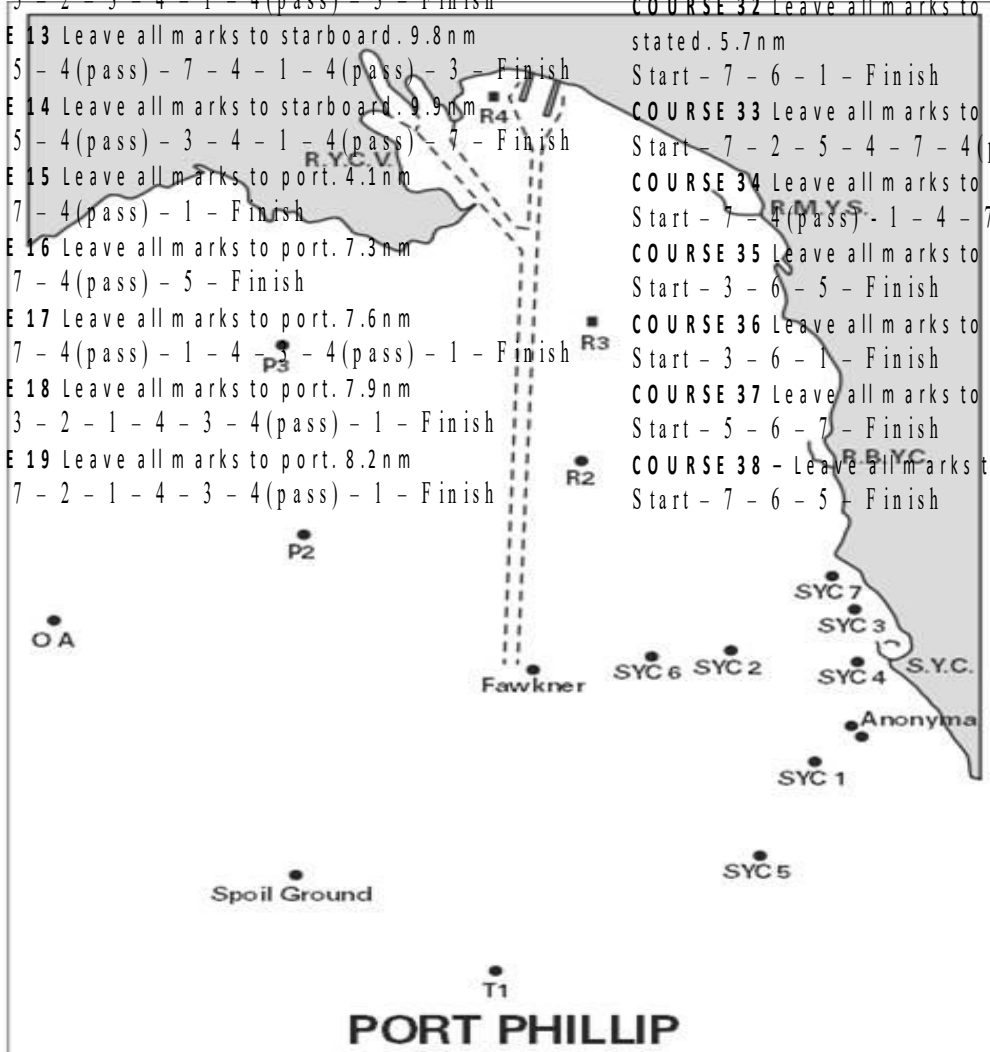
Description of SYC Courses for CYAA 2019/2020 Summer Series Race 3

SYC Marks 1-7 are Yellow, Pyramid in shape with a diagonal cross

SYC Course Descriptions for races with a windward gate

- COURSE 1** Leave all marks to starboard. 4.4 nm
Start - 1 - 2 - 3 - Finish
- COURSE 2** Leave all marks to port. 4.4 nm
Start - 3 - 2 - 1 - Finish
- COURSE 3** Leave all marks to starboard. 6.3 nm
Start - 5 - 2 - 3 - Finish
- COURSE 4** Leave all marks to port. 6.5 nm
Start - 3 - 2 - 5 - Finish
- COURSE 5** Leave all marks to starboard. 4.1 nm
Start - 1 - 4 (pass) - 7 - Finish
- COURSE 6** Leave all marks to starboard. 7.3 nm
Start - 5 - 4 (pass) - 7 - Finish
- COURSE 7** Leave all marks to starboard. 7.9 nm
Start - 1 - 2 - 3 - 4 - 1 - 4 (pass) - 3 - Finish
- COURSE 8** Leave all marks to starboard. 8.2 nm
Start - 1 - 4 (pass) - 7 - 4 - 1 - 4 (pass) - 7 - Finish
- COURSE 9** Leave all marks to starboard. 8.2 nm
Start - 1 - 2 - 7 - 4 - 1 - 4 (pass) - 3 - Finish
- COURSE 10** Leave all marks to starboard. 8.5 nm
Start - 1 - R2 - 3 - Finish
- COURSE 11** Leave all marks to starboard. 8.7 nm
Start - 1 - 6 - 3 - 4 - 2 - 3 - Finish
- COURSE 12** Leave all marks to starboard. 9.8 nm
Start - 5 - 2 - 3 - 4 - 1 - 4 (pass) - 3 - Finish
- COURSE 13** Leave all marks to starboard. 9.8 nm
Start - 5 - 4 (pass) - 7 - 4 - 1 - 4 (pass) - 3 - Finish
- COURSE 14** Leave all marks to starboard. 9.9 nm
Start - 5 - 4 (pass) - 3 - 4 - 1 - 4 (pass) - 7 - Finish
- COURSE 15** Leave all marks to port. 4.1 nm
Start - 7 - 4 (pass) - 1 - Finish
- COURSE 16** Leave all marks to port. 7.3 nm
Start - 7 - 4 (pass) - 5 - Finish
- COURSE 17** Leave all marks to port. 7.6 nm
Start - 7 - 4 (pass) - 1 - 4 - 3 - 4 (pass) - 1 - Finish
- COURSE 18** Leave all marks to port. 7.9 nm
Start - 3 - 2 - 1 - 4 - 3 - 4 (pass) - 1 - Finish
- COURSE 19** Leave all marks to port. 8.2 nm
Start - 7 - 2 - 1 - 4 - 3 - 4 (pass) - 1 - Finish

- COURSE 20** Leave all marks to port unless otherwise stated. 8.8 nm
Start - 7 - 6 - 1 - 4 - 2 (Stbd) - 3 (stbd) - Finish
- COURSE 21** Leave all marks to port. 9.1 nm
Start - 3 - 6 - 1 - 4 - 2 - 1 - Finish
- COURSE 22** Leave all marks to port unless otherwise stated. 9.7 nm
Start - 3 - 6 - 5 - 2 (Stbd) - 1 - Finish
- COURSE 23** Leave all marks to port. 6.3 nm
Start - 3 - 2 - 5 - Finish
- COURSE 24** Leave all marks to port. 9.8 nm
Start - 7 - 4 (pass) - 5 - 4 - 3 - 4 (pass) - 1 - Finish
- COURSE 25** Leave all marks to port. 9.9 nm
Start - 3 - 4 (pass) - 5 - 4 - 7 - 4 (pass) - 1 - Finish
- COURSE 26** Leave all marks to starboard. 5.7 nm
Start - 1 - 6 - 7 - Finish
- COURSE 27** Leave all marks to starboard. 6.6 nm
Start - 5 - 2 - 7 - Finish
- COURSE 28** Leave all marks to starboard. 7.2 nm
Start - 5 - 6 - 3 - Finish
- COURSE 29** Leave all marks to Starboard. 8.2 nm
Start - 1 - 4 (pass) - 7 - 4 - 1 - 4 (pass) - 7 - Finish
- COURSE 30** Leave all marks to starboard. 6.3 nm
Start - 5 - 4 (pass) - 7 - Finish
- COURSE 31** Leave all marks to starboard. 5.6 nm
Start - 1 - 6 - 3 - Finish
- COURSE 32** Leave all marks to port unless otherwise stated. 5.7 nm
Start - 7 - 6 - 1 - Finish
- COURSE 33** Leave all marks to port. 10.7 nm
Start - 7 - 2 - 5 - 4 - 7 - 4 (pass) - 1 - Finish
- COURSE 34** Leave all marks to port. 8.2 nm
Start - 7 - 4 (pass) - 1 - 4 - 7 - 4 (pass) - 1 - Finish
- COURSE 35** Leave all marks to port. 7.2 nm
Start - 3 - 6 - 5 - Finish
- COURSE 36** Leave all marks to port. 5.6 nm
Start - 3 - 6 - 1 - Finish
- COURSE 37** Leave all marks to starboard. 7.3 nm -
Start - 5 - 6 - 7 - Finish
- COURSE 38** - Leave all marks to port. 7.3 nm
Start - 7 - 6 - 5 - Finish



APPROXIMATE SYC FIXED CLUB MARK LOCATIONS



Mark	Description	Location relative to the SYC breakwater light (approximate)		Light Characteristics	Approx. Latitude	Approx. Longitude
SYC 1	Yellow pyramid with a diagonal cross	1.4 nm	192' M	FL(4)Y.10s	37° 57.80'S	144° 58.89'E
SYC 2	Yellow pyramid with a diagonal cross	1.3 nm	244' M	FL(4)Y.10s	37° 56.60'S	144° 57.97'E
SYC 3	Yellow pyramid with a diagonal cross	0.4 nm	331' M	FL(4)Y.10s	37° 56.24'S	144° 59.25'E
SYC 4	Yellow pyramid with a diagonal cross	Approximately 0.4nm (Bearing 243° (M)) from Race Control Tower		FL(4)Y.10s	37° 56.81'S	144° 59.40'E
SYC 5	Yellow pyramid with a diagonal cross	2.5 nm	190' M	FL(4)Y.10s	37° 58.81'S	144° 58.38'E
SYC 6	Yellow pyramid with a diagonal cross	2.0 nm	264' M	FL(4)Y.10s	37° 56.70'S	144° 57.08'E
SYC 7	Yellow pyramid with a diagonal cross	2.0 nm	320° M	FL(4)Y.10s	37° 55.85'S	144° 59.01'E
SYC 8 Crowding Mark	Yellow cone with a diagonal cross	Approximately 0.1 nm (Bearing 243° (M)) from Race Control Tower		FL(4)Y.10s	NA	NA