

# BoM and Met Eye forecasts for Sunday July 21 1000 & 1300 wind strength on Port Phillip at St. Kilda. Saturday

Forecast issued at 4:53pm EST on Saturday 20 July 2019.

## Sunday 21 July

Gale Warning for Sunday for Port Phillip

### Winds

Northerly 25 to 35 knots shifting northwesterly and easing to 15 to 20 knots during the morning. Winds tending west to northwesterly and easing further to 10 to 15 knots during the afternoon. Wind tending north to northwesterly and increasing to 15 to 20 knots at night.

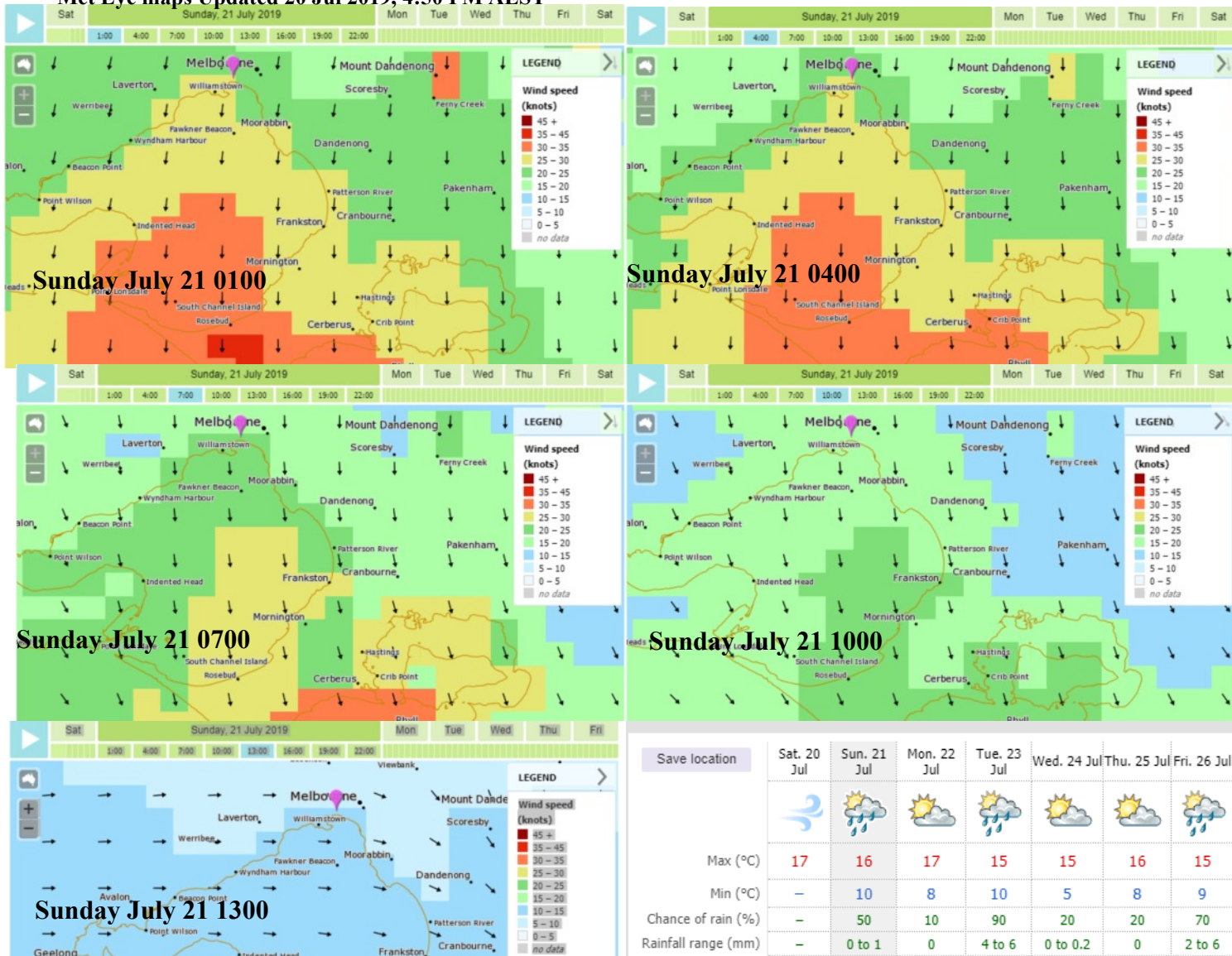
### Seas

2 to 3 metres, decreasing below 2 metres during the morning, then decreasing to 1 metre during the afternoon.

### Weather

50% chance of showers in the morning. Mostly sunny afternoon.

### Met Eye maps Updated 20 Jul 2019, 4:50 PM AEST



Save location	Sat. 20 Jul	Sun. 21 Jul	Mon. 22 Jul	Tue. 23 Jul	Wed. 24 Jul	Thu. 25 Jul	Fri. 26 Jul
Max (°C)	17	16	17	15	15	16	15
Min (°C)	-	10	8	10	5	8	9
Chance of rain (%)	-	50	10	90	20	20	70
Rainfall range (mm)	-	0 to 1	0	4 to 6	0 to 0.2	0	2 to 6
Issued 20 Jul 2019	<a href="#">Detail</a>	<a href="#">Hide</a>	<a href="#">Detail</a>	<a href="#">Detail</a>	<a href="#">Detail</a>	<a href="#">Detail</a>	<a href="#">Detail</a>

Sunday								
	1.00 AM	4.00 AM	7.00 AM	10.00 AM	1.00 PM	4.00 PM	7.00 PM	10.00 PM
Temperature (°C)	12	11	10	11	15	15	12	9
Wind direction	N	N	N	N	NNW	NNW	N	N
Wind speed	25	25	21	18	11	7	15	15