



SAILING INSTRUCTIONS

CLASSIC YACHT ASSOCIATION of AUSTRALIA

SUMMER SERIES 2015/2016

RACE SEVEN on February 14

The race will be conducted by the HOBSONS BAY YACHT CLUB
for the Classic Yacht Association of Australia Inc. A0034323W

1 RULES.

The CYAA 2015/2016 Summer Series of races will be governed by:

- The ISAF Racing Rules of Sailing (RRS 2013-2016).
- The Special Regulations and Prescriptions of Yachting Australia (YA) Part 1 For Racing Boats.
- Requirements of the Port of Melbourne Corporation (PoMC) regulations. Skippers shall at all times abide by the PoMC Regulations covering the navigation of small craft and yachts and comply with the directions of race officials patrolling the shipping channels.
- Any Skipper subject of a complaint by a Ship's Master for any reason whatsoever may be disqualified.
- YA Safety Category 6 shall apply. YA Safety Category 7 yachts may be accepted with the express permission of the Organizing Authority.
- Boats shall lodge an appropriate 2015/2016 Safety Compliance Declaration with their home club prior to this Summer Series of races.
- Crews on yachts without lifelines must wear PFD1 – Failure to do so will result in boats being scored DSQ.
- **RRS Rule 44.1 is changed so that the two turns penalty exoneration requirement under RRS Part 2 is replaced by the one turn penalty exoneration.**

2 NOTICES TO COMPETITOR.

- Notices to competitors will be posted to CYAA members via email and may be posted on the RYCV and HBYC official notice boards.

3 CLASS FLAG.

- The class flag for the series will be the pennant of the Classic Yacht Association of Australia

4 THE START.

- The scheduled warning signal will at 1025 hrs.
- Three or more starters shall constitute a race.
- The start line will be in the vicinity of PoMC Channel Marks 17 and 70.
- The START line is a line between the signal mast on the HBYC Race Committee vessel, **Privateer**, displaying a 'On Station' orange flag, and a plain orange cylindrical mark.

5 THE FINISH.

- The FINISH line is a line between the signal mast on the "On Station" HBYC Race Committee vessel, **Privateer**, displaying a blue flag, and a plain orange cylindrical mark.

6 RACING AREA.

- Shall be in the northern waters of Port Phillip in the vicinity Breakwater Pier, Gellibrand Shoal Mark, Pipeline Mark P3 and recreational Mark R4.

7 THE COURSES.

- The allocated course will be signalled with a numeral flag, on the signal mast of the “On Station” HBYC Race Committee vessel, **Privateer**..

8 TIME LIMIT.

- All boats finishing after 1330 hours will be scored DNF.
The target time for the first boat to finish is 100 to 120 minutes from the race start. This changes RRS 35, Appendix A4 and A5.

9 PROTESTS

- Protest forms are available from the HBYC Web Site under club/forms, Forms. Protests and requests for shall be delivered by email/fax or hand delivered to HBYC managers office by the following Monday 12 noon.

SCORING.

- The scoring system is the “Low Point System with modifications in accordance with the Notice of Race.

10 SAFETY REGULATIONS.

- The race will not start if the wind speed is 25 knots or greater or if a GALE Warning is current.[BOM early am schedule] or at the Race directors discretion.
- When forecast sea conditions are deemed by the Race Control to be close to the 25 knot sustained wind threshold RYCV Courses for Hobsons Bay will be used.
- The crew of boats that do not conform to YA Special Regulations Part 1 Section 3.12 (category 6 races included) shall wear Personal Flotation Devices (PFDs) at all times whilst racing. PFDs shall conform to YA Special Regulations Section 5.01.1.
- HBYC recommend that all competitors wear an approved personal flotation device (PFD) whilst racing.
- A boat that retires from a race is requested to notify the race Control as soon as possible by calling the HBYC Race Committee vessel **Privateer** on VHF Channel 73. If the notification of retirement is not acknowledged, the competitor shall continue to endeavour to notify Race Control until acknowledgement is received. Any costs incurred in searching for competitors who retire but do not inform Race Control shall be borne by the competitor.

11 RADIO COMMUNICATION.

- The Race Control will monitor VHF radio channel 73.
- Except in an emergency, a boat shall neither make radio transmissions while racing nor receive radio communications not available to all boats. This restriction applies to mobile telephones.
- All boats, without exception, shall carry a VHF radio capable of receiving and transmitting on Channels 16 and 73. Failure to do so may result in a boat being scored DSQ.
- If calls to the race Control on channel 73 receive no response VHF Channel 16 is to be used to establish communication and for switching over to an agreed working channel.

12 DISCLAIMER OF LIABILITY

- Competitors participate in the regatta entirely at their own risk. See rule 4, Decision to Race.
- The organizing authorities, Classic Yacht Association of Australia and the Hobsons Bay Yacht club, will not accept any liability for material damage or personal injury or death sustained in conjunction with or prior to, during, or after each race of the CYAA 2015/2016 Summer Series of races.

13 INSURANCE

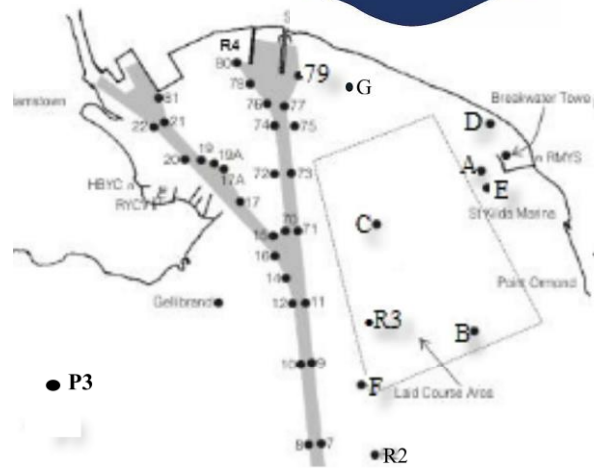
- Each participating boat shall be insured with valid third party liability insurance with a minimum cover of \$10,000,000 per event.

14 SHIPPING

- All boats must give way to and keep well clear of shipping. If any shipping is in the vicinity, boats shall keep clear of shipping channels.
- A boat which is in danger of interfering with the passage of commercial shipping may use its engine for propulsion providing the engine is used only for as long as is necessary, full details for the incident are reported to the Race Control and the boat is not advantaged in any way by the use of the engine.
- All skippers should keep a listening watch on VHF Channel 12, the PoMC Radio channel for shipping movements, VHF Channel 16 and 73 before, during and after racing.

Classic Yacht Association of Australia (Victoria) 2015/2016 Summer Series H1 to H11 Course

Descriptions Rev 2.0 July 14 2015



Course No. H1

Approx. 7.5 Nautical miles

Start in a Southerly direction, leave Channel lateral mark 71 to Starboard, round RMYS mark F to Port, round a Yellow mark with a black band, approximately 200 metres west of RMYS A Mark to Port, round R4 to Port, then to finish line.

Course No. H2

Approx. 7.2 Nautical miles

Start in a S.W. direction, leave channel lateral 74 to Port, round a Yellow mark with a black band, approximately 200 metres west of RMYS A mark to Starboard, round R3 to Starboard, round R4 to Port, then to finish line.

Course No. H3

Approx. 7.7 Nautical miles

Start in a Northerly direction, pass mark R4 to Starboard, round a Yellow mark with a black band, approximately 200 metres west of RMYS A mark to Starboard, round RMYS mark F to Starboard, leave channel lateral marks 9,11 and 71 to Port, then to finish line

Course No. H4

Approx. 7.6 Nautical miles

Start in an Easterly direction, round a Yellow mark with a black band, approximately 200 metres west of RMYS A mark to starboard, round RMYS mark F to starboard, leave channel lateral marks 9, 11, 71 to Port, round mark R4 to port, then to finish line.

Course No. H5

Approx. 7.7 Nautical miles

Start in a Westerly direction, round R4 to Port, leave channel lateral marks 9, 11, 71 to Starboard, round RMYS mark F to Port, round a Yellow mark with a black band, approximately 200 metres west of RMYS A Mark to Port, then to finish line.

Course No. H6

Approx. 9.2 Nautical miles

Start in a Southerly direction, leave channel lateral marks 71 and 11 to Starboard, round mark R3 to Starboard, leave channel lateral marks 9 and 10 to Starboard, round pipeline mark P3 mark to Starboard, leave Gellibrand Shoal Mark and channel lateral mark 16 to Port, round RMYS C Mark to Port then to finish line.

Course No. H7

Approx. 9.6 Nautical miles

Start in a northerly direction, round mark R4 to Starboard, round RMYS C Mark to starboard, leave channel lateral mark 16 and Gellibrand Shoal Mark to Starboard, round pipeline mark P3 to Starboard, leave Gellibrand Shoal Mark to Port, leave channel lateral mark 16 to Port, round RMYS C Mark to Port then to finish line.

Course H8

Approx. 10.0 Nautical miles

Start in a northerly direction, round mark R4 to Starboard, round a Yellow mark with a black band, approximately 200 metres west of RMYS D Mark to Starboard, then through finish line and repeat for twice round.

Course H9

Approx. 10.0 Nautical miles

Start in an easterly direction, round a Yellow mark with a black band, approximately 200 metres west RMYS D Mark to Port, round mark R4 to Port, then to finish line and repeat for twice round.

Course H10

Approx 8.4 Nautical Miles

Start in a northerly direction, round mark R4 to Starboard, round RMYS Mark G to Starboard, round RMYS Mark C to Starboard. then through finish line and repeat for twice round.

Course H11

Approx 8.4 Nautical Miles. Start in a southerly direction, round RMYS Mark C to Port, round RMYS Mark G to Port, round Mark R4 to Port. then through finish line and repeat for twice round