



Classic Yacht Association

O F A U S T R A L I A

SAILING INSTRUCTIONS

CLASSIC YACHT ASSOCIATION of AUSTRALIA

2015/2016 SUMMER SERIES

RACE TWO on OCTOBER 18

The race will be conducted by the Royal Yacht Club of Victoria
on behalf of the Classic Yacht Association of Australia Inc. A0034323W

1 RULES.

The CYAA 2015/2016 Summer Series of races will be governed by:

- The ISAF Racing Rules of Sailing (RRS 2013-2016).
- The Special Regulations and Prescriptions of Yachting Australia (YA) Part 1 For Racing Boats.
- Requirements of the Port of Melbourne Corporation (PoMC) regulations. Skippers shall at all times abide by the PoMC Regulations covering the navigation of small craft and yachts and comply with the directions of race officials patrolling the shipping channels.
- Any Skipper subject of a complaint by a Ship's Master for any reason whatsoever may be disqualified.
- YA Safety Category 6 shall apply. YA Safety Category 7 yachts may be accepted with the express permission of the Organizing Authority.
- Boats shall lodge an appropriate 2015/2016 Safety Compliance Declaration with their home club prior to this 2015/2016 CYAA Summer Series of races.
- Crews on yachts without lifelines must wear PFD1 – Failure to do so will result in boats being scored DSQ.
- **RRS Rule 44.1 is changed so that the two turns penalty is replaced by the one turn penalty**

2 NOTICES TO COMPETITOR.

- Notices to competitors will be posted to CYAA members via email and may be posted on the RYCV and HBYC official notice boards.

3 CLASS FLAG.

- The class flag for the series will be the pennant of the Classic Yacht Association of Australia

4 THE START.

- The scheduled warning signal will at 1025 hrs.
- Three or more starters shall constitute a race.
- The start line will be in the area adjacent Number 74 PoMC Channel Mark.
- The START line is a line between the signal mast on the Committee Boat, displaying a 'On Station' orange flag, and a plain orange cylindrical mark.

5 THE FINISH.

The FINISH line is a line between the signal mast on the "On Station" Committee Boat displaying a blue flag, and a plain orange cylindrical mark or the RYCV Marina Race control station displaying a plain blue flag and the plain orange "O" Mark,

6 RACING AREA.

- Shall be either the northern waters of Port Phillip or in Hobson's Bay.
- Selection of racing area is at the discretion of the race officer.

7 THE COURSES.

- The allocated course will be signalled with alphabetical and numeral flags, on the committee boat, when the committee vessel goes on station.
- There will be two groups of courses for the 2015/2016 Summer Series.
- The first course group is designated H1 to H11 and will be displayed with the prefix H plus the selected course number. Course details are attached.
- The second course group is taken from the RYCV SAILING INSTRUCTIONS Green book Sept 2008, (still current for 2015/2016) and will be displayed with the prefix R plus the selected course number.
- If the RYCV marina finish line is to be the designated finish line, the RYCV Committee vessel will display this signal by the flying of Code Flag "O" plus the designated course numbers for the race.

8 TIME LIMIT.

- All boats finishing after 1300 hours will be scored DNF.
The target time for the first boat to finish is 90 to 100 minutes. This changes RRS 35, Appendix A4 and A5.

9 SCORING.

- The scoring system is the "Low Point System with modifications in accordance with the Notice of Race.

10 SAFETY.

- The race will start at the Race Directors discretion. A consistent wind speed of 25 knots or greater or if a GALE Warning is current.[BOM early am schedule] will be used as the guideline for upper limit of sea conditions leading to a race abandonment.
- The crew of boats that do not conform to YA Special Regulations Part 1 Section 3.12 (category 6 races included) shall wear Personal Flotation Devices (PFDs) at all times whilst racing. PFDs shall conform to YA Special Regulations Section 5.01.1.
- RYCV and HBYC recommend that all competitors wear an approved personal flotation device (PFD) whilst racing.
- A boat that retires from a race is requested to notify the race committee as soon as possible by calling the RYCV race committee boat on VHF Channel 69, they are retiring from racing and comment they do or don't need assistance. Boats not complying shall be scored DNC.

11 RADIO COMMUNICATION.

- The Race Committee will monitor VHF radio channel 69.
- Except in an emergency, a boat shall neither make radio transmissions while racing nor receive radio communications not available to all boats. This restriction also applies to mobile telephones.
- All boats, without exception, shall carry a VHF radio capable of receiving and transmitting on Channels 16 and 69. Failure to do so may result in a boat being scored DSQ.
- If calls to the race committee on channel 69 receive no response VHF Channel 16 is to be used to establish communication and for switching over to an agreed working channel.

12 DISCLAIMER OF LIABILITY.

- Competitors participate in the regatta entirely at their own risk. See rule 4, Decision to Race.
- The organizing authority will not accept any liability for material damage or personal injury or death sustained in conjunction with or prior to, during, or after the regatta.

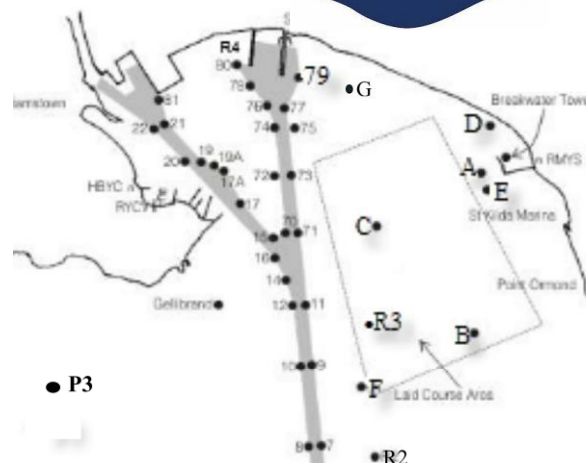
13 INSURANCE.

- Each participating boat shall be insured with valid third party liability insurance with a minimum cover of \$10,000,000 per event.

14 SHIPPING

- All boats must give way to and keep well clear of shipping. If any shipping is in the vicinity, boats shall keep clear of shipping channels.
- A boat which is in danger of interfering with the passage of commercial shipping may use its engine for propulsion providing the engine is used only for as long as is necessary, full details for the incident are reported to the Race Committee and the boat is not advantaged in any way by the use of the engine.
- All skippers should keep a listening watch on VHF Channel 12, the PoMC Radio channel for shipping notices, VHF Channel 16 and 69 before, during and after racing.

Classic Yacht Association of Australia (Victoria)
2015/2016 Summer Series H1 to H11 Course
Descriptions Rev 2.0 July 14 2015



Course No. H1

Approx. 7.5 Nautical miles

Start in a Southerly direction, leave Channel lateral mark 71 to Starboard, round RMYS mark F to Port, round a Yellow mark with a black band, approximately 200 metres west of RMYS A Mark to Port, round R4 to Port, then to finish line.

Course No. H2

Approx. 7.2 Nautical miles

Start in a S.W. direction, leave channel lateral 74 to Port, round a Yellow mark with a black band, approximately 200 metres west of RMYS A mark to Starboard, round R3 to Starboard, round R4 to Port, then to finish line.

Course No. H3

Approx. 7.7 Nautical miles

Start in a Northerly direction, pass mark R4 to Starboard, round a Yellow mark with a black band, approximately 200 metres west of RMYS A mark to Starboard, round RMYS mark F to Starboard, leave channel lateral marks 9,11 and 71 to Port, then to finish line

Course No. H4

Approx. 7.6 Nautical miles

Start in an Easterly direction, round a Yellow mark with a black band, approximately 200 metres west of RMYS A mark to starboard, round RMYS mark F to starboard, leave channel lateral marks 9, 11, 71 to Port, round mark R4 to port, then to finish line.

Course No. H5

Approx. 7.7 Nautical miles

Start in a Westerly direction, round R4 to Port, leave channel lateral marks 9, 11, 71 to Starboard, round RMYS mark F to Port, round a Yellow mark with a black band, approximately 200 metres west of RMYS A Mark to Port, then to finish line.

Course No. H6

Approx. 9.2 Nautical miles

Start in a Southerly direction, leave channel lateral marks 71 and 11 to Starboard, round mark R3 to Starboard, leave channel lateral marks 9 and 10 to Starboard, round pipeline mark P3 mark to Starboard, leave Gellibrand Shoal Mark and channel lateral mark 16 to Port, round RMYS C Mark to Port then to finish line.

Course No. H7

Approx. 9.6 Nautical miles

Start in a northerly direction, round mark R4 to Starboard, round RMYS C Mark to starboard, leave channel lateral mark 16 and Gellibrand Shoal Mark to Starboard, round pipeline mark P3 to Starboard, leave Gellibrand Shoal Mark to Port, leave channel lateral mark 16 to Port, round RMYS C Mark to Port then to finish line.

Course H8

Approx. 10.0 Nautical miles

Start in a northerly direction, round mark R4 to Starboard, round a Yellow mark with a black band, approximately 200 metres west of RMYS D Mark to Starboard, then through finish line and repeat for twice round.

Course H9

Approx. 10.0 Nautical miles

Start in an easterly direction, round a Yellow mark with a black band, approximately 200 metres west RMYS D Mark to Port, round mark R4 to Port, then to finish line and repeat for twice round.

Course H10

Approx 8.4 Nautical Miles

Start in a northerly direction, round mark R4 to Starboard, round RMYS Mark G to Starboard, round RMYS Mark C to Starboard. then through finish line and repeat for twice round.

Course H11

Approx 8.4 Nautical Miles. Start in a southerly direction, round RMYS Mark C to Port, round RMYS Mark G to Port, round Mark R4 to Port. then through finish line and repeat for twice round.